



COMMERCIAL VEHICLE **UPFIT SOLUTIONS**

PRODUCT CATALOG



COMPANY PROFILE

We're a global source for commercial vehicle upfit solutions with over 20 years of experience, representing seven leading manufacturers.



WM System

Europe's Premier Loading Ramp Manufacturer for Cargo Vans, established in 1991.



MAD

Hoists for Commercial Vehicles and Cargo Vans, Suspension Systems for Cargo Vans and RVs, established in 1976.



Jonesco Plastics

Fenders, Underbody Toolboxes, Document Holders, Fire Extinguisher Cabinets, established in 1967.



Meroni Locks

Europe's Leading Manufacturer of High-Security Door Locks for Cargo Vans, founded in 1945.



Co.Par

Fenders, Underbody Toolboxes, Document Holders, Handwash Stations, established in 1977.



Aeroz Products

Aerodynamic Kits for Class 3-8 Vehicles, founded in 1987.



AVA-MATIC

Ventilation solutions for commercial vehicles, founded in 1954.

TABLE OF CONTENTS

Loading Ramps	04
Aerodynamics	18
Van Steps	24
Hoists	28
Suspension Springs	32
Van Locks	34
Fenders	40
Cabinets	50
Ventilation Fans	56



LOADING RAMPS

We offer several loading ramp models to help you easily and safely transport loads in your cargo van. A variety of features and price points are available to meet your needs.





Non-Swivel Ramps

Our simplest loading ramp series: permanently installed behind rear doors, taking up less than 13" of cargo space.



Swivel Ramps

Our most popular loading ramp series: standard exterior swivel allows for cargo area access without deploying the ramp.



High-Capacity Swivel Ramps

Our hardest-working loading ramp series: 2,200 or 3,300 lb. load capacity with standard exterior swivel.



Hide-A-Ramp

Our unobstructed loading ramp design: 48" wide ramp stows beneath a subframe floor, utilizing full width of cargo space.



WM SYSTEM "Light" Series Non-Swivel Ramps



Our non-swivel loading ramps are WM System's "Light Series" ramps, which are our lowest price point, and easiest operation and install. Keeping the ramp inside the vehicle protects it from rain, snow, and vandalism. No maintenance or service is required; these ramps will provide years of hassle free performance, designed to be used numerous times a day, every day.

Light Series loading ramps are suitable for all small cargo vans, full size cargo vans, box on body, and full size box trucks. In small cargo vans, the Light Series is suitable for rear door applications. In full size cargo vans, this series can be mounted at either the rear or side doors. In either application, the loading ramp sits just inside the doors and only takes up about 13 inches of cargo space, including the mounting hardware.



Width from 23" - 47", length from 78" - 128".
(Custom sizes can be special ordered)



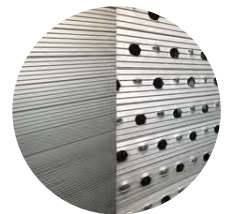
880 - 1,300 lb. capacity.



Spring assist comes standard.



Optional: No-Drill mounting hardware.



Aluminum ramp surface available in solid or perforated texture.



Flexible flap threshold provides smooth transition to vehicle floor.



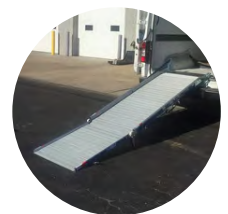
Use ramp as a plank on steps, van-to-van, loading docks and more while maintaining full capacity.



Equipped with wheels at the end of ramp for easy deployment.



Optional: Quick Release kit allows ramp to be removed in 1 minute, ideal for sharing ramp across a fleet of vehicles.



Optional: Third piece extensions available for even greater length.

SPECS

MODEL	DESCRIPTION	W (IN)	L (IN)	STORED HEIGHT (IN)	CAPACITY (LBS)
9ALN505/NS	Standard capacity, Solid surface, Non-swivel, 2 section, Side door compatible	23	78	43	880
9ALN501/NS	Standard capacity, Solid surface, Non-swivel, 2 section, Side door compatible	23	98	53	880
9ALN503/NS	Standard capacity, Solid surface, Non-swivel, 2 section, Side door compatible	23	108	58	880
9ALN523/NS	Standard capacity, Solid surface, Non-swivel, 2 section	23	128	68	880
9ALN001/NS	Standard capacity, Solid surface, Non-swivel, 2 section, Side door compatible	31	79	43	880
9ALN001/3S/NS	Standard capacity, Solid surface, Non-swivel, 3 section, Side door compatible	29	116	43	880
9ALN003/NS	Standard capacity, Solid surface, Non-swivel, 2 section	31	98	53	880
9ALN032/NS	Standard capacity, Solid surface, Non-swivel, 2 section	39	88	48	880
9ALN033/NS	Standard capacity, Solid surface, Non-swivel, 2 section	39	98	53	880
9ALN036/NS/HC	High capacity, Solid surface, Non-swivel, 2 section	39	108	58	1,320
9ALN038/NS/HC	High capacity, Solid surface, Non-swivel, 2 section	39	128	68	1,320
9ALN553/NS	Standard capacity, Solid surface, Non-swivel, 2 section	47	98	53	880
9ALN275/NS/HC	High capacity, Solid surface, Non-swivel, 2 section	47	108	58	1,320
9ALN277/NS/HC	High capacity, Solid surface, Non-swivel, 2 section	47	128	68	1,320
9ALN001/PERF/NS	Standard capacity, Perforated surface, Non-swivel, 2 section, Side door compatible	31	79	43	880
9ALN003/PERF/NS	Standard capacity, Perforated surface, Non-swivel, 2 section, Side door compatible	31	98	53	880
9ALN036/PERF/NS/HC	High capacity, Perforated surface, Non-swivel, 2 section	39	108	58	1,320
9ALN553/PERF/NS	Standard capacity, Perforated surface, Non-swivel, 2 section	47	98	53	880
9ALN275/PERF/NS/HC	High capacity, Perforated surface, Non-swivel, 2 section	47	108	58	1,320
9ALN277/PERF/NS/HC	Light Series Ramp, High capacity, Perforated surface, Non-swivel, 2 section	47	128	68	1,320

APPLICATION GUIDE

MODEL	TRANSIT HIGH ROOF	TRANSIT MID ROOF	TRANSIT LOW ROOF	TRANSIT CONNECT	PROMASTER SUPER HIGH ROOF	PROMASTER HIGH ROOF	PROMASTER STANDARD/LOW	PROMASTER CITY
9ALN505/NS	✓	✓	✓	✓	✓	✓	✓	✓
9ALN501/NS	✓	✓			✓	✓	✓	
9ALN503/NS	✓	✓			✓	✓		
9ALN523/NS	✓				✓	✓		
9ALN001/NS	✓	✓	✓	✓	✓	✓	✓	✓
9ALN001/3S/NS	✓	✓	✓	✓	✓	✓	✓	✓
9ALN003/NS	✓	✓			✓	✓	✓	
9ALN032/NS	✓	✓			✓	✓	✓	
9ALN033/NS	✓	✓			✓	✓	✓	
9ALN036/NS/HC	✓	✓			✓	✓		
9ALN038/NS/HC	✓				✓	✓		
9ALN553/NS	✓	✓			✓	✓	✓	
9ALN275/NS/HC	✓	✓			✓	✓		
9ALN277/NS/HC	✓				✓	✓		
9ALN001/PERF/NS	✓	✓	✓	✓	✓	✓	✓	✓
9ALN003/PERF/NS	✓	✓			✓	✓	✓	
9ALN036/PERF/NS/HC	✓	✓			✓	✓		
9ALN553/PERF/NS	✓	✓			✓	✓	✓	
9ALN275/PERF/NS/HC	✓	✓			✓	✓		
9ALN277/PERF/NS/HC	✓				✓	✓		

APPLICATION GUIDE

MODEL	SPRINTER HIGH ROOF	SPRINTER LOW ROOF	METRIS	NV HIGH ROOF	NV LOW ROOF	NV200	FORD E-SERIES/CHEVY EXPRESS
9ALN505/NS	✓	✓	✓	✓	✓	✓	✓
9ALN501/NS	✓	✓		✓	✓		
9ALN503/NS	✓			✓			
9ALN523/NS	✓			✓			
9ALN001/NS	✓	✓	✓	✓	✓	✓	✓
9ALN001/3S/NS	✓	✓	✓	✓	✓	✓	✓
9ALN003/NS	✓	✓		✓	✓		
9ALN032/NS	✓	✓	✓	✓	✓		
9ALN033/NS	✓	✓		✓	✓		
9ALN036/NS/HC	✓	✓		✓			
9ALN038/NS/HC	✓			✓			
9ALN553/NS	✓	✓		✓	✓		
9ALN275/NS/HC	✓	✓		✓			
9ALN277/NS/HC	✓			✓			
9ALN001/PERF/NS	✓	✓	✓	✓	✓	✓	✓
9ALN003/PERF/NS	✓	✓		✓	✓		
9ALN036/PERF/NS/HC	✓	✓		✓			
9ALN553/PERF/NS	✓	✓		✓	✓		
9ALN275/PERF/NS/HC	✓	✓		✓			
9ALN277/PERF/NS/HC	✓			✓			



WM SYSTEM "Light Plus" Series Swivel Ramps



The WM Systems Light Plus series loading ramp is our most popular ramp system, favored by large fleets and owner-operators worldwide because of its industry-leading swivel function. This standard feature allows for 90 degree external swivel, acting as a second door to allow for cargo area access without the need to deploy the ramp. Customers love the swivel function not only for easy cargo access, but also for the ability to load 40"x48" pallets into the cargo area using a forklift.

This ramp comes equipped with a robust spring assist system making deployment or storage easy. Constructed of high quality materials, nearly every piece of this ramp is constructed of aluminum for longevity in rainy, snowy, icy, muddy and saltwater/coastal climates.

The Light Plus series loading ramp is suitable for full size vans.



Widths from 31" - 47", lengths from 78" - 128".
(Custom sizes can be special ordered)



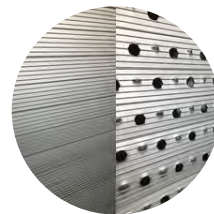
1,500 lb. capacity.



Spring assist comes standard.



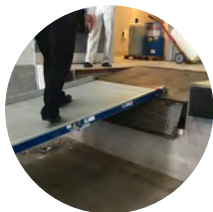
No-Drill mounting hardware.



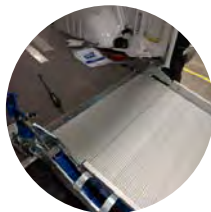
Aluminum ramp surface available in solid or perforated texture.



Standard left-hand swivel pivots the ramp, allowing easy cargo area access.



Use ramp as a plank on steps, van-to-van, or loading docks while maintaining weight capacity.



Flexible flap threshold provides smooth transition to vehicle floor.



Equipped with wheels at the end of ramp for easy deployment.



Optional: Right-hand swivel can be special ordered to pivot the ramp on the passenger's side.



Optional: Internal lock kit available to store the ramp against the wheel well.



Optional: Third piece extensions available for even greater length.

SPECS

MODEL	DESCRIPTION	W (IN)	L (IN)	STORED HEIGHT (IN)	CAPACITY (LBS)
9ALPC001	Standard capacity, Solid surface, LH swivel, 2 section	31	79	46	1,500
9ALPC235	Standard capacity, Solid surface, LH swivel, 2 section	37	108	61	1,500
9ALPC235/RH	Standard capacity, Solid surface, RH swivel, 2 section, Rear AC unit compatible	37	108	61	1,500
9ALPC229	Standard capacity, Solid surface, LH swivel, 2 section	37	126	68	1,500
9ALPC551	Standard capacity, Solid surface, LH swivel, 2 section	47	78	46	1,500
9ALPC551/3S	Standard capacity, Solid surface, LH swivel, 3 section	45	116	46	1,500
9ALPC553	Standard capacity, Solid surface, LH swivel, 2 section	47	98	56	1,500
9ALPC553/3S	Standard capacity, Solid surface, LH swivel, 3 section	45	135	56	1,500
9ALPC275	Standard capacity, Solid surface, LH swivel, 2 section	47	108	61	1,500
9ALPC279	Standard capacity, Solid surface, LH swivel, 2 section	47	126	69	1,500
9ALPC235/PERF	Standard capacity, Perforated surface, LH swivel, 2 section	37	108	61	1,500
9ALPC235/PERF/RH	Standard capacity, Perforated surface, RH swivel, 2 section, Rear AC unit compatible	37	108	61	1,500
9ALPC229/PERF	Standard capacity, Perforated surface, LH swivel, 2 section	37	126	68	1,500
9ALPC553/PERF	Standard capacity, Perforated surface, LH swivel, 2 section	47	98	56	1,500
9ALPC275/PERF	Standard capacity, Perforated surface, LH swivel, 2 section	47	108	61	1,500
9ALPC279/PERF	Standard capacity, Perforated surface, LH swivel, 2 section	47	126	69	1,500

APPLICATION GUIDE

MODEL	TRANSIT HIGH ROOF	TRANSIT MID ROOF	TRANSIT LOW ROOF	PRO MASTER SUPER HIGH ROOF	PRO MASTER HIGH ROOF	PRO MASTER STANDARD / LOW	SPRINTER HIGH ROOF	SPRINTER LOW ROOF	NV HIGH ROOF	NV LOW ROOF
9ALPC001	✓	✓	✓	✓	✓	✓	✓	✓		
9ALPC235	✓	✓		✓	✓		✓		✓	
9ALPC235/RH	✓	✓		✓	✓		✓		✓	
9ALPC229	✓			✓	✓		✓		✓	
9ALPC551	✓	✓	✓	✓	✓	✓	✓	✓		
9ALPC551/3S	✓	✓	✓	✓	✓	✓	✓	✓	✓	✓
9ALPC553	✓	✓		✓	✓	✓	✓	✓	✓	✓
9ALPC553/3S	✓	✓		✓	✓	✓	✓	✓	✓	✓
9ALPC275	✓	✓		✓	✓		✓		✓	
9ALPC279	✓			✓	✓		✓		✓	
9ALPC235/PERF	✓	✓		✓	✓		✓		✓	
9ALPC235/PERF/RH	✓	✓		✓	✓		✓		✓	
9ALPC229/PERF	✓			✓	✓		✓		✓	
9ALPC553/PERF	✓	✓		✓	✓	✓	✓	✓	✓	✓
9ALPC275/PERF	✓	✓		✓	✓		✓		✓	
9ALPC279/PERF	✓			✓	✓		✓		✓	





WM SYSTEM "PC" Series High-Capacity Swivel Ramps



The WM System PC series high-capacity loading ramp is our hardest-working ramp system, capable of handling cargo up to 3,300 lb. The PC series is a swivel ramp that's a step up in weight capacity from the Light Plus swivel series, using an aluminum surface and steel side rails and substructure for added strength.

These ramps are favored by large fleets and owner-operators across North America for the industry-leading swivel function. This standard feature allows for 90 degree external swivel, acting as a second door to allow for cargo area access without the need to deploy the ramp. Customers love the swivel function not only for easy cargo access, but also for the ability to load 40x48 pallets into the cargo area using a forklift.

The PC series loading ramp is suitable for full size vans.



Width from 47" - 54", length from 98" - 128".
(Custom sizes can be special ordered)



2,200 or 3,300 lb. standard capacity.



Spring assist comes standard.



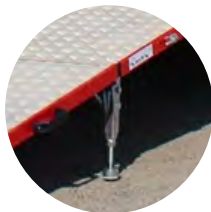
No-Drill mounting hardware.



Aluminum five bar diamond plate ramp surface.



Standard left-hand swivel pivots the ramp, allowing easy cargo area access.



Self-positioning adjustable feet provide added strength to the ramp center.



Flexible flap threshold provides smooth transition to vehicle floor.



Equipped with wheels at the end of ramp for easy deployment.



Optional: Right-hand swivel can be special ordered to pivot the ramp on the passenger's side.



Optional: Internal lock kit available to store the ramp against the wheel well.



Optional: Third piece extensions available for even greater length.

SPECS

MODEL	DESCRIPTION	W (IN)	L (IN)	STORED HEIGHT (IN)	CAPACITY (LBS)
91617	High capacity, Solid surface, LH swivel, 2 section	47	98	54	2,200
91548	High capacity, Solid surface, LH swivel, 2 section	47	108	58	2,200
91729	High capacity, Solid surface, LH swivel, 2 section	47	128	69	3,300
81605 (extension)	High capacity, Solid surface, Compatible with any PC series ramp, Removable 3rd section extension	47	49	49	3,300

APPLICATION GUIDE

MODEL	TRANSIT HIGH ROOF	TRANSIT MID ROOF	PRO MASTER SUPER HIGH ROOF	PRO MASTER HIGH ROOF	PRO MASTER STANDARD/LOW	SPRINTER HIGH ROOF	SPRINTER LOW ROOF	NV HIGH ROOF	NV LOW ROOF
91617	✓	✓	✓	✓	✓	✓	✓	✓	✓
91548	✓	✓	✓	✓		✓	✓	✓	
91729	✓		✓	✓		✓		✓	
81605 (extension)	✓	✓	✓	✓	✓	✓	✓	✓	✓





NATIONAL FLEET PRODUCTS

"Hide-A-Ramp"



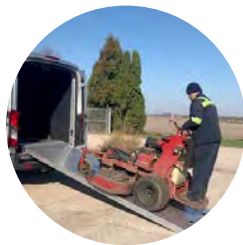
The Hide-A-Ramp is our newest loading ramp for cargo vans, designed to be our widest clearance loading system. With a 48" wide free-and-clear ramp deck, there are no side rails or mounting hardware to get in the way when loading wide equipment. As long as your equipment fits in your cargo van, it can be safely loaded and unloaded using the Hide-A-Ramp. You will also maintain the ability to load 40x48 pallets into the cargo area using a forklift.

This ramp system is designed with a subfloor installation, housing the ramp horizontally just above the vehicle floor, raising the floor height by 6". Aluminum tracks are bolted into existing holes in the Ford Transit making it a modification-free install, and all other models require only 8 drilled holes. The ramp is manually operated, sliding on the aluminum tracks to deploy and store.

Designed with the lawncare industry in mind, the mostly-aluminum construction will withstand years of use in snowy, icy, muddy, wet and saltwater conditions. An optional pallet tray is available for storage of fertilizer, salt or sand.



48" width;
10' length.



2,500 lb. weight
capacity.



Optional: pallet tray
available for supplies
storage.



Solid surface with
horizontal raised
lines for traction
assistance.



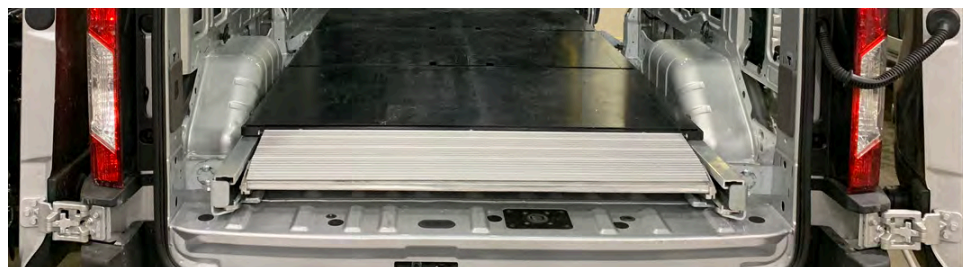
Optional: Expanded
metal or powder
coated steel
decking available.

SPECS

MODEL	SURFACE	W (IN)	L (IN)	STORED HEIGHT (IN)	UNIT WEIGHT (LBS)	CAPACITY (LBS)
HAR10	Solid	48	120	6	350	2500

APPLICATION GUIDE

MODEL	TRANSIT HIGH ROOF	TRANSIT MID ROOF	TRANSIT LOW ROOF	PRO MASTER HIGH ROOF	PRO MASTER STANDARD / LOW	SPRINTER HIGH ROOF	SPRINTER LOW ROOF	SELECT BOX BODIES
HAR10	✓	✓	✓	✓	✓	✓	✓	✓





AERODYNAMIC KITS

We offer several high-quality, commercial truck aerodynamic products to improve the ride and safety of your vehicles while significantly reducing fuel consumption, operating costs and carbon footprint.





AEROZ PRODUCTS

FuelScoop, FridgeScoop and Aerodynamics Kits



Aeroz Products has supplied high-quality, commercial truck aerodynamic products since 1983.

The FuelScoop, FridgeScoop and Full Aerodynamic Kits are roof- and cab-mounted, fiberglass, air-deflecting devices designed for medium duty (class 3-8) vehicles. Product benefits include:

- Significantly reduces fuel costs or increases EV range (median US fuel savings are 20% with a range of 13%-27%)
- Recoup product investment in as little as 12 months
- Reduce your fleet's carbon footprint
- Reduced transmission wear and tear
- Improve driver control and safety
- Available for most box applications, including van, cab over and day cab (Hino, Isuzu, Mitsubishi, Transit, Sprinter, Freightliner and International)

A qualified mechanic should easily be able to install each product in 1-2 hours. They either bolt to existing factory anchor points or bond directly to the cab roof, making it a no-drill, modification-free installation.



Median fuel savings are 20%, with a range of 13%-27%



No-drill install eliminates leaks and corrosion



Recoup investment in as little as 12 months



Available for most box applications



Every gallon saved prevents 20 lbs of CO₂ emissions



FuelScoop

A roof-mounted fiberglass air-deflecting device designed for medium duty, **dry-freight** box trucks.



FridgeScoop

A roof-mounted fiberglass air-deflecting device designed for medium duty, **refrigerated** box trucks.



Aerodynamic Kit

A roof and cab-mounted, multi-piece fiberglass air-deflecting kit for FuelScoop or FridgeScoop, available for Isuzu, Sprinter and Transit box trucks.



Sunvisor

A roof-mounted one-piece fiberglass sun deflector for Isuzu N-Series and F-Series trucks.

MODELS

MODEL	PRODUCT	VEHICLE	MODEL APPLICATION	HEIGHT (IN)
01011Hi-US	Fuelscoop	Hino	155/195 & M	32"
01017Hi-268	Fuelscoop	Hino	238, 268, 338, L, XL	32"
01014Hi-268	Fuelscoop	Hino	238, 268, 338, L, XL	40"
01011Is-08-US	Fuelscoop	Isuzu	N-Series	32"
01015Is-08-US	Fuelscoop	Isuzu	F-Series	24"
01016Is-08-US	Fuelscoop	Isuzu	F-Series	40"
01011Mi-US	Fuelscoop	Mitsubishi Fuso	Canter	32"
04101/1	Fuelscoop	Mercedes	Sprinter	24-34"
01016Fr	Fuelscoop	Freightliner	M2/M12	36"
01016In	Fuelscoop	International	MV	36"
04103/1	Fuelscoop	Ford	Transit	32"
01021Hi-US	FridgeScoop	Hino	155-195 & M	17"
01021Is-08-US	Fridgescoop	Isuzu	N-Series	17"
01021Mi-US	Fridgescoop	Mitsubishi Fuso	Canter	17"
04123/1	Fridgescoop	Ford	Transit	32"
01036Is-08-US	FridgeScoop Molded Platform	Isuzu	F-Series	15"
04115-US	FuelScoop Full Aerodynamic Kit	Isuzu	F-Series (350mm cab extenders)	40"
04115-200-US	FuelScoop Full Aerodynamic Kit	Isuzu	F-Series (200mm cab extenders)	40"
04101-19	FuelScoop Full Aerodynamic Kit	Mercedes	Sprinter [2019-on]	24-34"
04103	FuelScoop Full Aerodynamic Kit	Ford	Transit	32"
04123	FridgeScoop Full Aerodynamic Kit	Ford	Transit	Set for Reefer
06111Is	Sunvisor	Isuzu	N-Series	n/a
06116Is	Sunvisor	Isuzu	F-Series	n/a
06101Mb	Sunvisor	Mercedes	Sprinter	n/a





VAN STEPS

*Our van steps provides quick, ergonomic access in and out of cargo vans.
Rear and side door models now available!*





Rear Door Step

400 lb. weight capacity and compatible with all Transit, ProMaster and Sprinter models.



Side Door Step

400 lb. weight capacity and compatible with all Transit, ProMaster and Sprinter models.



NATIONAL FLEET PRODUCTS

Rear Door Van Step



Our Rear Door Van Step provides quick, easy, and ergonomic access in and out of cargo vans. The van step stows just behind the rear cargo doors, and quickly folds down to provide entry and exit access in seconds. We've designed our van steps for customers who use their van as a mobile workshop, frequently accessing their tools and supplies. This product enables an ergonomic and convenient way to get in and out of your van that's friendly on the knees.

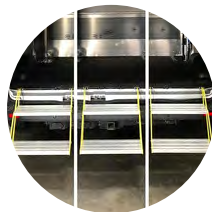
Designed with steel mounting plates, steel powder coated side rails, and aluminum step constructions, our van steps are built to withstand years of use in snowy, icy, muddy, wet and saltwater conditions.



21" step width



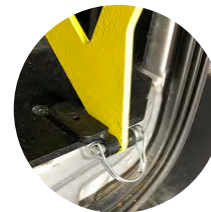
400 lb. weight capacity



Passenger side, center and driver side mounting positions



Aluminum step surface, with horizontal lines for traction assistance



Quick release pins for easy removal



Narrow profile takes up minimal cargo space

MODEL	VEHICLE APPLICATION	STORED HEIGHT (IN)	UNIT WEIGHT (IN)	STEP WIDTH (IN)	DSTEP DEPTH (IN)	STEP RISE (IN)	WEIGHT CAPACITY (LBS)	STORED DEPTH (IN)
64000	Transit	27	45	21	8.5	13	400	9
65000	ProMaster	27	45	21	8.5	13	400	9
66000	Sprinter	27	45	21	8.5	13	400	9



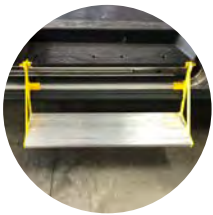
NATIONAL FLEET PRODUCTS

Side Door Van Step



Our Side Door Van Step provides quick, easy, and ergonomic access in and out of cargo vans. This van step stows just inside the side sliding doors in the step well, and quickly folds down to provide entry and exit assistance in seconds. We designed our van steps for customers who use their van as a mobile workshop, frequently accessing their tools and supplies. This product enables an ergonomic and convenient way to get in and out of your van that's friendly on the knees.

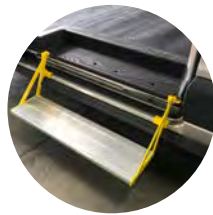
Designed with steel powder coated side rails and aluminum step constructions, our van steps are built to withstand years of use in snowy, icy, muddy, wet and saltwater conditions.



36" step width



400 lb. weight capacity



Aluminum step surface, with horizontal lines for traction assistance



Quick release pins for easy removal



Narrow profile takes up minimal cargo space

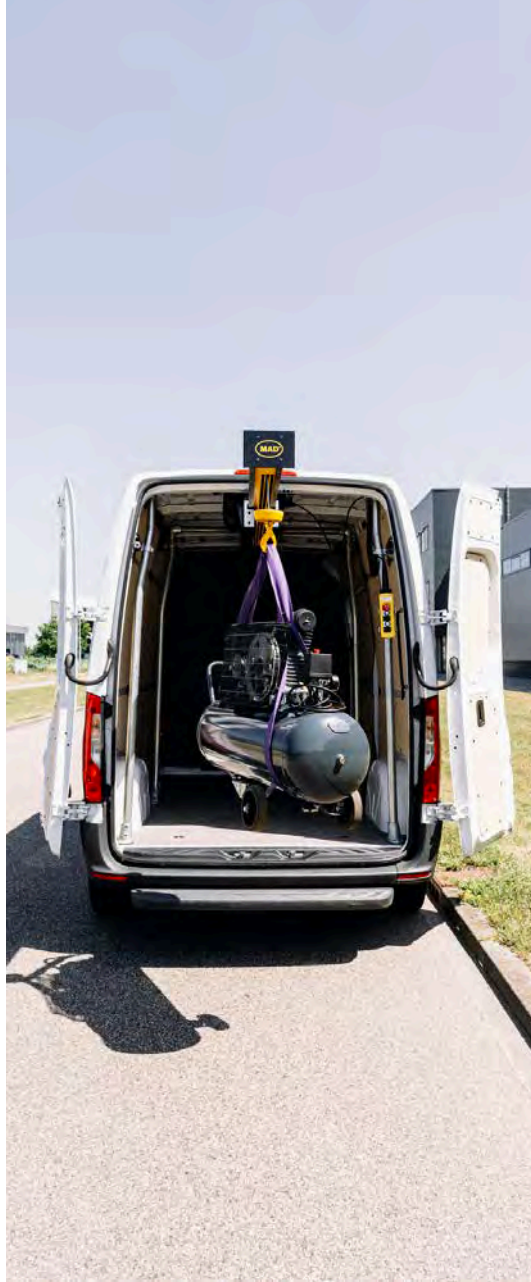
MODEL	VEHICLE APPLICATION	STORED HEIGHT (IN)	UNIT WEIGHT (IN)	STEP WIDTH (IN)	STEP DEPTH (IN)	STEP RISE (IN)	WEIGHT CAPACITY (LBS)	STORED DEPTH (IN)
64100	Transit	10.5	20	33.75	9	11	400	14
65100	ProMaster	10.5	20	36	9	11	400	14
66100	Sprinter	10.5	22	43.25	9	11	400	14



EASYLOAD HOISTS

The MAD EasyLoad Hoist stands out against all the other loading systems. This on-board system consists of a high quality, compact winch unit with extendable boom. Lift loads up to 550 or 1,100 lbs. and position them within the cargo area of the vehicle, all with the press of a button. The stable, lightweight construction guarantees absolute reliability and is maintenance-free.







MAD EasyLoad Hoists



The MAD EasyLoad Hoist stands out against all the other cargo van and box truck loading systems. Using the electrically-powered extending boom, the Light-Duty model can lift loads up to 550 lb., and the Heavy-Duty model can lift loads up to 1,100 lb.

The system consists of a high quality, compact winch unit with extendable boom. The boom and winch are operated with the press of a button. The handy mobile control unit can be operated with one hand. You won't require any other equipment or need to rely on the facilities available at delivery and collection points.

The EasyLoad Hoist is mounted on a lightweight, self supporting sub-frame which is attached to existing anchor points in the vehicle. Just two cables are connected to the power supply of the vehicle. Expensive modifications are unnecessary! When vehicles are exchanged, your EasyLoad Hoist can easily be uninstalled and reinstalled again. This hoist has a universal fit, compatible with Transit, ProMaster, Sprinter, NV, enclosed service/utility body and box truck applications.

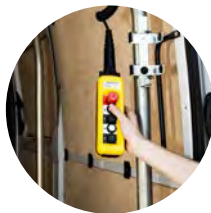


Positionable across the cargo area

The MAD EasyLoad Hoist helps drivers and employees avoid safety and injury hazards, especially strains associated with repeated lifting and moving heavy loads. Increase the ability and productivity of your fleet today with an EasyLoad Hoist!



7.9 - 54.1 ft. cable lengths available



Mobile control unit operates winch and slide



4 hours average install time



Lifting speed of 2-4 inches per second, model dependent



550 - 1,100 lb. maximum lifting capacity



91" length of lifting beam, model dependent

SPECS

MODEL	MAX CAPACITY (LB)	LIFTING BEAM LENGTH (IN)	HORIZON. TRAVEL OF HOOK (IN)	CABLE LENGTH (FT)	UNIT WEIGHT (LB)	WINCH OPERATION	CABLE THICKNESS (IN)	CABLE MATERIAL	LIFTING SPEED W/O LOAD
EL2502S320D	550	91	110	15.7	429	12V/100A	0.19	Steel	4 in / sec
EL5002S230D	1,100	91	110	7.9	485	12V/100A	0.19	Steel	2 in / sec
EL5012S230D	1,100	91	110	54.1	582	12V/100A	0.19	Steel	3 in / sec

APPLICATION GUIDE

MODEL	TRANSIT HIGH ROOF	TRANSIT MID ROOF	TRANSIT LOW ROOF	PRO MASTER SUPER HIGH ROOF	PRO MASTER HIGH ROOF	PRO MASTER LOW ROOF	SPRINTER HIGH ROOF	SPRINTER LOW ROOF	NV HIGH ROOF	NV LOW ROOF	E-SERIES / EXPRESS
EL2502S320D	✓	✓	✓	✓	✓	✓	✓	✓	✓	✓	✓
EL5002S230D	✓	✓		✓	✓		✓		✓		✓
EL5012S230D	✓	✓		✓	✓		✓		✓		✓





SUSPENSION **SPRINGS**

With MAD auxiliary springs, your van maintains the original ride-height even when fully loaded, and remains safe and comfortable to drive when unloaded.





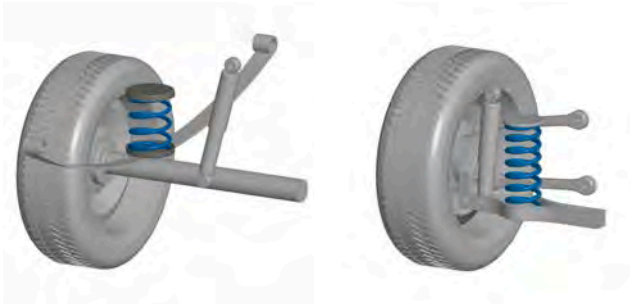
MAD Coil Suspension Springs



MAD springs are progressively wound steel coil springs fitted in conjunction with the original suspension. As the load imposed on the suspension increases, the springs quickly become stiffer, reducing the amount of “sag,” improving the ride height, handling and safety of the load or towing vehicle. Where space or the design do not permit an additional spring, a complete replacement main-spring is fitted with the same improved characteristics.

Why use auxiliary springs?

- Better road holding and handling when loaded
- More suspension travel with full load
- Improved driver comfort
- Helps maintain consistent hitch height



Why choose MAD?

- No drilling
- Maintain near-normal ride height
- Quickly and easily mounted
- Does not affect vehicle warranty

MODEL	VEHICLE	TYPE	START	TIME TO FIT	REMARKS
HV-068210	Transit	310, 330, 350 (V363)	08/2013	45	RWD, 4WD, Excl. Twin Rear Wheel
HV-068290	Transit	310, 330, 350 (V363)	08/2013	45	RWD, Excl. Twin Rear Wheel, HD kit, min. load 880 lbs.
HV-198190	Sprinter	906 (OK, KA, AC) 30-35 907, 3.0-3.5t	06/2006	45	RWD, Excl. Twin rear wheels, Excl. 4WD, Excl. CE8 raised vehicles
HV-138140	Promaster	1500, 2500, 3500	09/2013	45	Standard duty set
HV-138200	Promaster	1500, 2500, 3500	09/2013	45	HD kit, min. load 1,650 lbs. including chassis



VAN LOCKS

High security locks to protect your van against theft. With the UFO range of van locks, Serrature Meroni has raised the bar in van security. No more messy DIY solutions or padlocks. UFO van locks are designed to automotive standards and will secure your van loading area from unwanted access.





UFO Classic

The original Meroni padlock for every kind of van and light commercial vehicle.



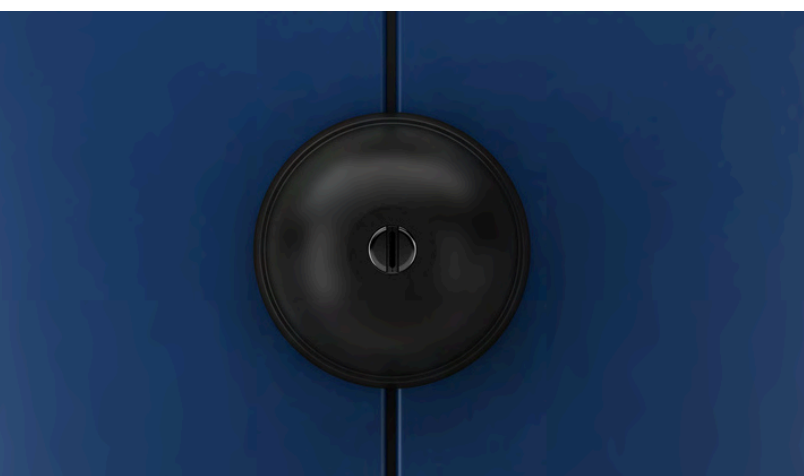
UFO+

The ideal choice for couriers dealing with multi-drop deliveries.



UFO²

Simplicity at its best.



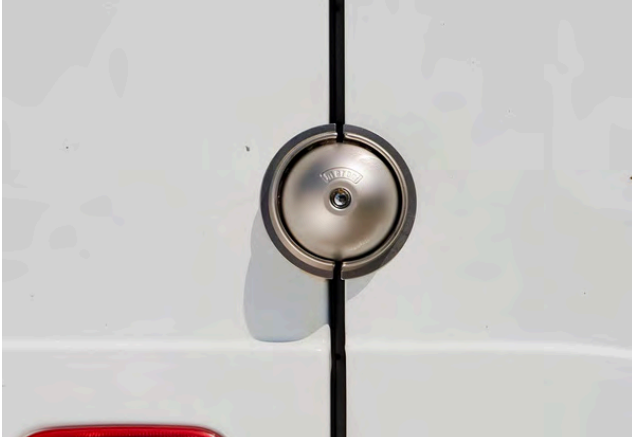
UFO³

The ultimate range of security locks for for LCVs.



SERRATURE MERONI

UFO Classic



UFO Classic's intrusion safety is guaranteed by both form and materials used. The spherical cap adheres perfectly to the bodywork, leaving no room for threading instruments to pry.

In addition, the core of the tubular key cylinder is anti-trap and antipicking, with the coveted CNPP and Tov certifications.

The perfect product for:

- Carpenters
- Freelancers

Specifications:

- Reinforced shell, with internal hardened steel spheres to provide anti-drill and anti-cut protection
- Matt nickel finish
- 7 radial pin cylinder with up to 250,000 combinations
- Lock with drill-resistant, pick-proof security cylinder
- Adhesive drilling template for quick installation
- Supplied with all the necessary fitting accessories
- Dimensions: Ø 95 x h 39 mm
- Installation time: 30 min

MODEL	DESCRIPTION
8080331215D	Single lock keyed unique with (2) keys
8080332315D	(2) lock kit keyed-alike with (3) keys
8080333315D	(3) lock kit keyed-alike with (3) keys



SERRATURE MERONI

UFO+



Developed in 2012, the UFO+ is Europe's most popular vehicle security lock, with over 1 million units on the road worldwide. The UFO+ is a user friendly slamlock, thanks to its automatic locking system and practical reversible flat key.

The locks stylish design, ease of installation and construction quality perfectly meet the security requirements of small, medium and large fleets; an ideal choice for couriers dealing with multi-drop deliveries on a daily basis, who need to protect the vehicle load from opportunistic theft. Since it's fixed to the bodywork (it cannot be removed as a padlock), it remains integrated with the door and closes automatically.



The perfect product for:

- Corporate fleets
- Leasing and rental fleets
- Couriers

Specifications:

- Ultra-resistant AISI 304 stainless steel lock body
- 15 pin high security cylinder offering more than 100,000 combinations
- Anti-drilling and anti-picking tempered hardened core
- Anti-drill defender
- Reversible flat key with rubberized grip
- Emergency release cable
- Dimensions: h 88 x d 55 x l 112 mm



MODEL	DESCRIPTION
8086H3122B	Single lock keyed unique with (2) reversible keys
8086H3232B	(2) lock kit keyed-alike with (3) reversible keys
8086H3332B	(3) lock kit keyed-alike with (3) reversible keys



SERRATURE MERONI

UFO²



UFO² is the evolution of the historic Meroni UFO Classic, which revolutionized the world of van security.

UFO² and UFO Classic have similar dimensions; the UFO² remaining fixed to the vehicle bodywork at all times. UFO² is a user friendly deadlock, featuring a non key retaining design.

The average installation time for the new UFO² is only 25 minutes. A quick solution providing immediate additional security for your van and peace of mind 24/7. UFO² is the ideal solution for, leisure and work, van owners who need additional security when required. With UFO² the van is protected, when you need it!



The perfect product for:

- Plumbers
- Electricians

Specifications:

- Zamak shell and stainless steel plates
- Pearl nickel finish
- 8 pin radial cylinder offering 250,000 combinations
- Anti-drill and anti-pick certified cylinder
- Non key retaining / 90° rotating
- Tempered and cemented hardened core
- Deadlock
- Opening/closing symbols printed
- Dimensions: Ø 81 x h 40.5 mm
- Installation time: 25 min



MODEL	DESCRIPTION
8092332415	(2) lock kit with (4) keys



SERRATURE MERONI

UFO³



The UFO³ is Meroni's flagship lock system. It's a universal-fit, surface-mounted range of slamlocks that can be installed on the rear and side sliding door.

This range features an ultra-resistant 52-54 HRC hardened steel shell and an emergency release cable that allows opening from the inside of the loading area, thanks to an unlocking system which works independently from the cylinder. UFO³ series is the perfect solution for large fleets, for the operators and drivers who open and close the van doors many times a day.



- UFO³ COMFORT is the ultimate slamlock, featuring a high security cylinder. It is extremely practical, robust and uses a reversible flat key. The incredible strength of the 52-54 HRC hardened steel shell and the cylinder dust cover make UFO³ COMFORT a benchmark product for the automotive aftermarket.
- UFO³ SMART DUO can be used either as a slamlock, automatically locking itself once the door is shut, or as a deadlock, by disabling the slamlock functionality with a simple turn of the key. UFO³ SMART DUO dual-function makes this lock one of the most versatile locks within our range.



The perfect product for:

- Contractors and tradespeople
- Company fleets
- Couriers

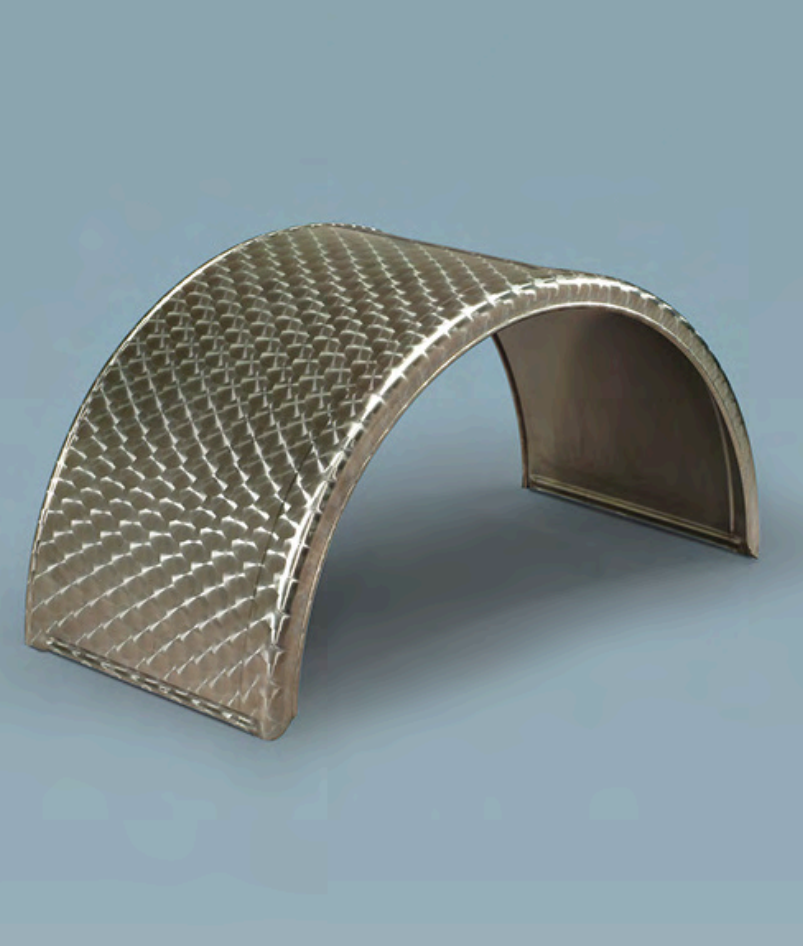
MODEL	DESCRIPTION
8090S223PB	(2) lock kit, UFO ³ SMART DUO Locks with (3) keys, white finish
8090S223PN	(2) lock kit, UFO ³ SMART DUO Locks with (3) keys, black finish
8090CM23PB	(2) lock kit, UFO ³ COMFORT Locks with (3) keys, white finish
8090CM23PN	(2) lock kit, UFO ³ COMFORT Locks with (3) keys, black finish



TRUCK AND TRAILER **FENDERS**

We carry a wide selection of high-quality plastic and stainless steel fenders to fit a variety of truck and trailer tire sizes.





Stainless Steel Fenders

We carry two models of stainless steel fenders by Co.Par of Italy: stainless steel "fiore" textured finish (shown), and stainless steel smooth finish with a rubber edge.



Plastic Fenders

We proudly offers Jonesco commercial truck fenders, made of UV-stabilized PE. Nearly 60 years experience and 8 million commercial vehicle fenders sold, Jonesco fender products are widely fitted as original equipment and distributed to 42 countries.

CO.PAR Stainless Steel Fenders



Stainless steel textured finish (SS models)

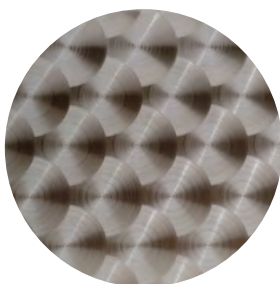
A particular manufacturing process is carried out for these fenders: unmistakable for their surface, extremely shiny and bright, they represent the premium finish of the stainless steel line.

Stainless steel smooth finish with a rubber edge (SSRE models)

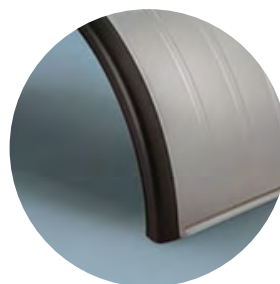
This line is produced in stainless steel 304, 0.8mm thickness, with a PVC edge.



Smooth stainless steel close-up



Textured stainless steel close-up



Rubber edge close-up



Optional: mounting hardware suitable for all stainless fender applications, sold separately

MODEL	FINISH	RIM SIZE (IN)	LENGTH (IN)	SPAN (IN)	WIDTH (IN)
33SS	Textured, without rubber edge	16-17	63	39.4	19.7
33SSRE	Smooth, with rubber edge	17.5-19.5	65	39.4	21.7
40SS	Textured, without rubber edge	19.5	68.9	43.7	21.7
40SSRE	Smooth, with rubber edge	19.5	68.9	43.7	21.7
43SS	Textured, without rubber edge	22.5	72.8	47.2	21.7
43SSRE	Smooth, with rubber edge	22.5	78.8	49.6	21.7
45SS	Textured, without rubber edge	22.5	82.7	52.8	25.6
45SSRE	Smooth, with rubber edge	22.5	82.7	52.8	25.6

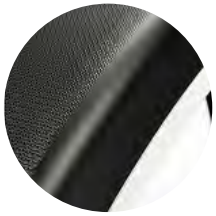
Any model and size available on demand.



JONESCO Plastic Single Axle Fenders



- Manufactured by Jonesco on patented extrusion machinery
- Fully recyclable, chemical resistant, UV-stabilized PE
- Premium quality - 3/32 inch wall thickness
- Proven in various climates (-58°F / +176°F)
- Strong and durable
- Easy to install
- Comprehensive range of sizes



HL series patterned texture



HL series white wall edge for improved visibility on one edge



HL series premium quality 3/32 inch wall thickness



JX series matte texture with ribs



Optional: mounting hardware suitable for all single axle applications, sold separately

MODEL	TEXTURE	RIM SIZE	INT. WIDTH	EXT. WIDTH	RADIUS	LENGTH	SPAN	HEIGHT	VALANCE
HL33	Patterned	16-17	19	19.5	50	63	40	20	2.5
HL38C	Patterned	22.5 super single	20	20.5	26	81	52	25.5	3
HL39B	Patterned	19.5	21	21.5	20	63.5	40	20	2.5
HL40	Patterned	19.5	21.5	22	21.5	67	43.5	21.5	3
HL43D	Patterned	20-22.5	24	24.5	21.5	70.5	43.5	23	3
HL43G	Patterned	20-22.5	24	24.5	25.5	60	45	17	3
HL45D	Patterned	20-22.5	25.5	26	25.5	48	40.5	10.5	3
HL45E	Patterned	2-22.5	25.5	26	25.5	60	45	16	3
HL47	Patterned	24.5	26.5	27	27	82.5	54	26	3
JX43A	Matte with ribs	20-22.5	24.5	25	25	76	50.5	24	3
JX45A	Matte with ribs	20-22.5	26	25.5	25.5	78.5	51.5	25	3



JONESCO Plastic Tank Trailer Fenders



- Jonesco developed and manufactured the first one-piece PE heavy-duty tandems for heavy vehicles.
- Front and rear available, ideal for tank trailer
- Bolt-on extensions available for front applications
- Fully recyclable, chemical resistant, UV stabilized MDPE
- Matte textured surface finish with 3 ribs for extra strength
- Proven in extreme climates
- Much lighter than steel & aluminum, saving fuel
- Non-rusting
- Highly durable, takes knocks without damage



Tandem fenders are designed to span the length of two axles



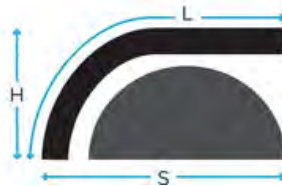
Matte textured surface finish with ribs for strength



Extensions available for front applications



Optional: mounting hardware suitable for all tandem applications, sold separately



MODEL	TEXTURE	Type	PLACEMENT	RIM SIZE	Bi (IN)	B (IN)	L (IN)	S (IN)	H (IN)
JTP98	Matte with ribs	Double tandem	Rear	22.5-24.5	25.5	26.5	110	98	16
JTP105	Matte with ribs	Double tandem	Front	22.5-24.5	25.5	26.5	111	105	16
JTP129	Matte with ribs	Double tandem	Front	22.5-24.5	25.5	26.5	135	129	16
JTP139	Matte with ribs	Double tandem	Front	22.5-24.5	25.5	26.5	145	139	16



JONESCO Plastic Tandem and Half Tandem



- Jonesco developed and manufactured the first one-piece PE heavy-duty tandems for heavy vehicles.
- Tandem fenders are designed to span the length of two axles.
- Fully recyclable, chemical resistant, UV stabilized MDPE
- Matte textured surface finish with 3 ribs for extra strength
- One or two piece tandems available. Two half tandems can be joined together to create a full tandem.
- Proven in extreme climates
- Much lighter than steel & aluminum, saving fuel
- Non-rusting
- Highly durable, takes knocks without damage



JTZ105 intended for refuse applications, center sections available for multi-axle applications



Tandem fenders are designed to span the length of two axles



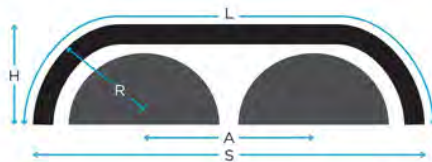
Matte textured surface finish with ribs for strength



One or two piece tandems available



Optional: mounting hardware suitable for all tandem, half-tandem and refuse applications



MODEL	TEXTURE	Type	RIM SIZE	Bi (IN)	B (IN)	R (IN)	L (IN)	S (IN)	H (IN)	A (IN)	AA2 (IN)
JHT650N	Matte with ribs	Single piece double tandem	22.5-24.5	25.5	26.5	25	133.25	105	24.5	55	-
JHT66	Matte with ribs	Half tandem or full tandem	22.5-24.5	25.5	26.5	25	38.5	52.25	25.5	-	-
JTZ105	Matte with ribs	Double tandem	22.5-24.5	24.5	25.5	-	-	105.5	23	52.75	26.5
JTZ152	Matte with ribs	Tri-axle center tandem	22.5-24.5	24.5	25.5	-	-	46.75	10	-	-



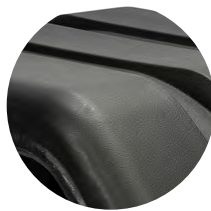
JONESCO Plastic Flat Top Fenders



- Rotationally molded mudguards with a gloss or textured finish.
- Fully recyclable, chemical resistant, UV-stabilized PE
- Suitable for flatbed vehicles, box vans, auto & boat hauler trucks
- Lightweight
- Non-rusting
- No mounting kit needed; simply bolt onto body



Gloss flat top close-up



Matte textured flat top close-up



Suitable for flatbed vehicles, box vans, auto & boat hauler trucks



Optional: mounting hardware suitable for all single axle applications, sold separately

MODEL	TEXTURE	RIM SIZE	Bi (IN)	B (IN)	L (IN)	S (IN)	H (IN)
J05F	Gloss	13-15	8	9	19.5	35	19
JX06F	Matte texture	13-15	10.5	11	15.5	35	19
J27F	Gloss	14-16	18	18.5	19.5	34.5	18
JX37F	Matte texture	16-17.5	20	20.5	15.5	39.5	21.5
J28F	Gloss	16-17.5	18	18.5	19.5	39.5	21
J36F	Gloss	20-22.5	18	18.5	19.5	52	28
J41F	Gloss	16-17.5	22	22.5	25	44.5	22
J43F	Gloss	19.5-22.5	23.5	24.5	27.5	49	24.5
J46F	Gloss	16-22.5	25.5	26.5	29.5	53.5	28.5



JONESCO Utility Trailer



- Rotationally molded small trailer mudguards with a gloss or matte texture finish
- Fully recyclable, chemical resistant, UV-stabilized PE
- Ideal for agriculture and construction equipment, utility trailers, etc.
- Lightweight
- Proven in various climates, non-rusting
- Flexible and easily fitted
- Comprehensive range of sizes
- Ideal for OEM applications
- J01SE/JW2483: Flat side to allow fitting directly onto the vehicle body



Gloss surface close-up



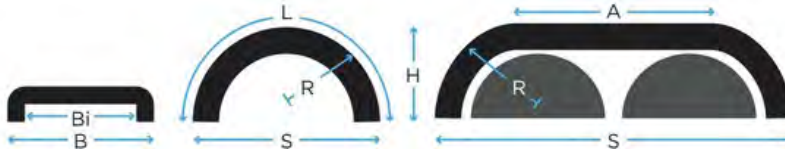
Matte surface close-up



Single tire application



Small double tandem application



MODEL	TEXTURE	APPLICATION	Bi (IN)	B (IN)	R (IN)	L (IN)	S (IN)	H (IN)	A (IN)
HL06C	Matte texture	Single tire	9.75	10.25	18.75	58.75	37.5	18.75	-
HL09	Matte texture	Single tire	11	11.5	16.25	50.5	32	16.25	-
HL12	Matte texture	Single tire	11	11.5	21.75	68	43.75	21.75	-
HL22A	Matte texture	Single tire	16.5	17	17.25	54.25	34.75	17.25	-
JT1864	Gloss	Small double tandem	7	7.5	11.5	-	48	9.75	25
JT2082	Gloss	Small double tandem	8	8.5	14	-	60.5	17.75	32.25
JT2086	Gloss	Small double tandem	8	8.25	17.5	-	69	21	34
JW2483	Gloss	Small double tandem	9.25	10.25	-	-	62.25	15	32.75



NATIONAL FLEET PRODUCTS

Fender Mounting Kits



KIT1



KIT2



KIT3



KIT3S



KIT4

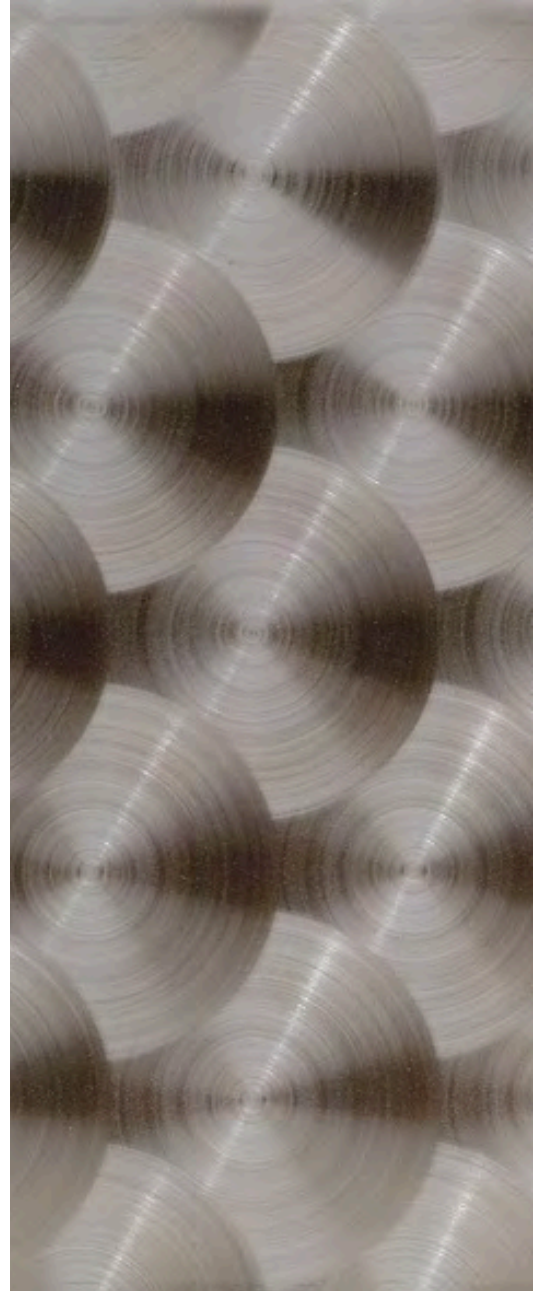


KIT5



KIT6

MODEL	APPLICATION
KIT1	Tandem
KIT2	Half Tandem
KIT3	Single Axle
KIT3S	Single Axle
KIT4	Single Axle
KIT5	Refuse & Roll-off Tri-Tandem: JTZ105
KIT6	Refuse & Roll-off Tandem: JTZ105 & JTZ152

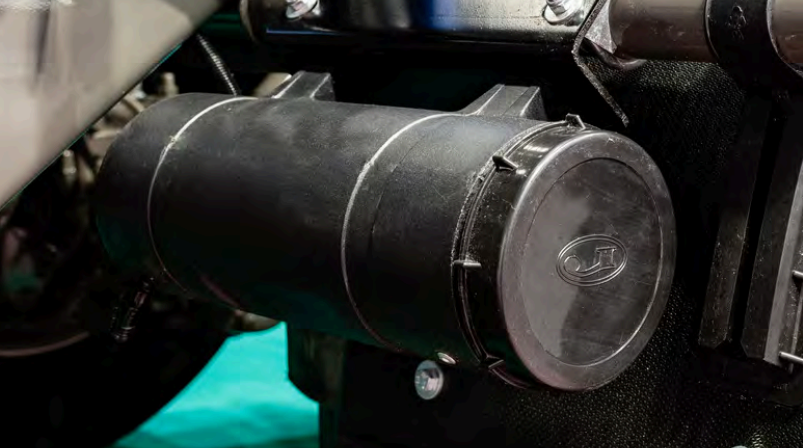




PLASTIC STORAGE CABINETS

We carry a range of plastic cabinets options for safely storing documents, tools and supplies, and safety equipment, keeping the contents clean, dry and ready for use.





Document Holders

Shield important documents and manuals from the elements, mountable on trucks, tractors, buildings, equipment and more.



Toolboxes

Underbody mounted and ideal for trailer bodies and agricultural equipment.



Extinguisher Cabinets

Wall or vehicle mounted and built to keep out dirt, dust, water, chemicals, etc.



Handwash Stations

Ideal for placement in high traffic areas to reduce the spread of contaminants and infectious diseases.



Document Holders



Shield your documents, manuals and tools from rain and the elements, while keeping them in excellent condition. We carry a variety of rotational molded polyethylene tubes and boxes (US Letter size) that are resistant to corrosion, chemicals, salt, etc. They are ideal for placement throughout trucks, tractors, farm equipment, motorcycles, jet skis, buildings, and more.



1002IMPR



1003IMPR



1004IMPR



1005BLACK



1005RED



1005GREEN



1006BLACK



1007BLACK

MODEL	WIDTH (IN)	DEPTH (IN)	HEIGHT (IN)	WEIGHT (LB)	COLOR	SUPPLIER
1002IMPR	2	2	12.5	1	Black	National Fleet Products
1003IMPR	3.5	3.5	12.5	1	Black	National Fleet Products
1004IMPR	4.25	4.25	12.5	1	Black	National Fleet Products
1005BLACK	3.5	3.5	12.5	1	Black	Jonesco
1005RED	3.5	3.5	12.5	1	Red	Jonesco
1005GREEN	3.5	3.5	12.5	1	Green	Jonesco
1006BLACK	11	3	13	1	Black	Jonesco
1007BLACK	11	2.5	14	1	Black	Co.Par



Toolboxes



Our rugged underbody storage boxes are up to the toughest of challenges. They're made from fully-recyclable, chemical-resistant, UV-stabilized Polyethylene. Designed with state of the art tooling, the lid either recesses with an automotive-grade rubber seal or overlaps the box to keep contents dry and safe. They're secure with key-operated locks that come standard. The lid opens 180° for unencumbered access.

They're ideal for the storage of any tools or supplies needed while operating vehicles and machinery, including agricultural machinery (i.e., the storage of PPE on crop sprayers).



Durable PE



Opens 180°



Jonesco models:
recessed lid with
rubber seal



Jonesco models:
easy-open, flip-
up handle



Co.Par models:
overlapping lid
with rubber seal



Co.Par models:
traction handle
with cover

MODEL	HEIGHT (IN)	WIDTH (IN)	DEPTH (IN)	WEIGHT (IN)	MOUNTING KIT	SUPPLIER
JBZ450	13.5	17.75	15.75	10	n/a	Jonesco
JBZ580	14.25	23	17.75	12	n/a	Jonesco
JBZ600	17.75	23.75	19	14.5	n/a	Jonesco
JBZ620	12.5	24.5	24	15.5	TBK620	Jonesco
JBZ650	18	25.5	19	16.5	TBK650	Jonesco
JBZ700	19	27.5	19.5	17.5	TBK700	Jonesco
JBZ800	18	31.5	19	20	TBK800	Jonesco
JBZ900	19	35.5	19.5	24	TBK900	Jonesco
JBZ1000	18	39.5	19	27.5	TBK1000	Jonesco
JBZ1200	18	47	19	31	TBK1200	Jonesco
NOVABOX60	16	24	19	11.5	NOVAKIT60	Co.Par
NOVABOX64	21	25.25	19.25	15.5	NOVAKIT64	Co.Par
NOVABOX80	19	31.5	18.5	16.5	NOVAKIT80	Co.Par
NOVABOX100	19.75	39.5	19.75	21	NOVAKIT100	Co.Par



Fire Extinguisher Cabinets



Our fire extinguisher cabinets are made of durable molded polyethylene with maximum UV protection. They're built to keep our dirt, dust, water, chemicals, etc. Front load and top load models are available to house various extinguisher sizes.

These cabinets are built to last for years. The hinges and latches are made of reliable nylon. They're able to be mounted on a wall or in a vehicle. The door can be adjusted to open on the right or left with heavy-duty gaskets, and windows are made of polycarbonate that blocks UV rays.



JBWE70



JBWE83



JBWE95



JBDE73



JBFR64



JBFR65



JBFR75



**KIT55
(JBFR65/75)**



**KIT65
(JBFR64)**

MODEL	LOAD TYPE	EXTINGUISHER SIZE (LB)	HEIGHT (IN)	WIDTH (IN)	DEPTH (IN)
JBWE70	Front load	10	27.5	11.75	10
JBWE83	Front load	20	32.5	12.5	10.5
JBWE95	Front load	20 CO2	37	17.5	11
JBDE73	Front load	20-30	26	14.5	12
JBFR64	Front load	10	25.25	9.875	9.875
JBFR65	Front load	10	25	10.25	10.875
JBFR75	Front load	20	29.5	12	12

Handwash Stations



Our handwash stations are ideal for placement in high traffic areas to reduce the spread of contaminants and infectious diseases. Available in three sizes, they all come with an integrated soap dispenser, which is removable allowing for refill of the water tank. A plastic blocking cap is also provided should the end user not want to use the soap dispenser feature. The inset water dispenser nozzle is intended to reduce the risk of damage by protecting it within the body of the tank. The tank is rotomolded using virgin polyethylene and a UV additive for stabilization.

There are three available mounting kits for the handwash station, each sold separately: freestanding stand, truck frame rail mount, and truck body mount.



IDRO18



IDRO25



IDRO40



IDRO/S
(stand)



IDRO/B
(body mount)



IDRO/F
(frame rail mount)

The freestanding frame makes the handwash station ideal for locations such as public parks and docks, warehouse and commercial building entry points, portable restroom facilities, golf course tee boxes, agricultural production facilities, and more. This hand wash station meets OSHA requirements for a hand washing station at construction sites.

The truck mounts allow for nearly universal install on a variety of commercial vehicles.

MODEL	WIDTH (IN)	DEPTH (IN)	HEIGHT (IN)	WEIGHT (IN)	CAPACITY (LT/GAL)
IDRO18	13.5	11.5	12.25	4.25	18/4.7
IDRO25	11.75	19.5	12	5.75	25/6.6
IDRO40	14.25	19.5	14.25	6.75	40/10.5



VENTILATION **FANS**

We carry a range of plastic and steel ventilation solutions for cargo vans and box bodies. Cycle out stale air, fumes, gasses and moisture.



Slim-Matic

The slimmest rotating roof vent on the market. Utilizes wind to provide 24/7 air circulation. Can be fitted to round or oblong openings.



Flo-Matic

Dual flow system, with one fresh air entry and one exit for stale air.



Deck-Matic

Ultra-flat roof vent in stainless steel finish, compatible with roof racks. Can be fitted to round or oblong openings.



Solar-Matic

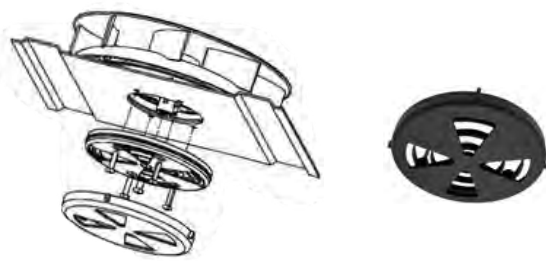
Solar-powered electric ventilator with a low profile.



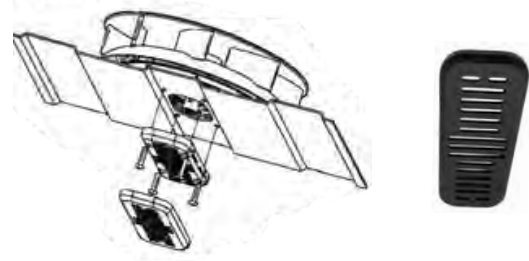
AVA-MATIC Ventilation Fans

SLIM-MATIC

The slimmest rotating roof vent on the market. Utilizes wind to provide 24/7 air circulation. Can be fitted to round or oblong openings. Extracts 22 CFM at city speeds (25 mph) and 75 CFM at highway speed (65 mph), capable of cycling the air in a high roof extended van in as little as 7 minutes.



Round opening fits most vehicle types

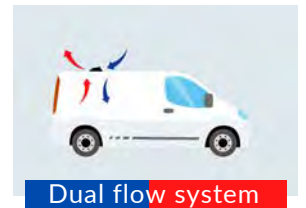


Rectangle opening suitable for ProMaster roof contours

VERSION	MODEL	MATERIAL	EXTERIOR COLOR	SHUTTER COLOR	SHUTTER SHAPE	EXTERNAL DIAMETER	OPENING SIZE	INSTALLED HEIGHT
Slim-Matic	AVA5120	Plastic	Black	Black	Round	9.05in (230mm)	3.15in (80mm)	2.2in (56mm)
Slim-Matic	AVA5110	Plastic	Black	Black	Rectangle	9.05in (230mm)	1.73in x 3in (44mm x 76mm)	2.2in (56mm)
Slim-Matic	AVA5220	Plastic	White	White	Round	9.05in (230mm)	3.15in (80mm)	2.2in (56mm)
Slim-Matic	AVA5210	Plastic	White	White	Rectangle	9.05in (230mm)	1.73in x 3in (44mm x 76mm)	2.2in (56mm)

FLO-MATIC

Powerful air circulation while driving via a dual flow system, with one fresh air entry and one exit for stale air. Fresh air enters through inlet and creates a flow that expels stale air from the rear of the vent. No need to drill an extra hole or a floor drain.



Dual flow system

VERSION	MODEL	MATERIAL	EXTERIOR COLOR	EXTERNAL SIZE	OPENING SIZE	INSTALLED HEIGHT
Flo-Matic	AVA822	Steel	Black	10.38in x 6.65in (275mm x 169mm)	(2) 3in (76mm) holes	2.2in (56mm)

DECK-MATIC

The Deck-Matic is the thinnest ventilator in its category. It's manufactured in AISI316L stainless steel making it weather resistant and durable. It's anti-submersion system allows waterproofing against bad weather and washing while maintaining effective ventilation. Can be fitted to round or oblong openings.



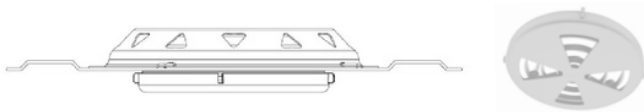
Fits under roof racks



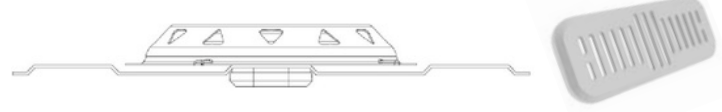
Standard vehicle application



ProMaster application



Round opening fits most vehicle types



Rectangle opening suitable for ProMaster roof contours

VERSION	MODEL	MATERIAL	EXTERIOR COLOR	SHUTTER COLOR	SHUTTER SHAPE	OVERALL SIZE	OPENING SIZE	INSTALLED HEIGHT
Deck-Matic	AVA8285W	Stainless Steel	Stainless Steel	White	Round	7.87in (200mm)	3.15in (80mm)	1.1in (28mm)
Deck-Matic	AVA8280W	Stainless Steel	Stainless Steel	White	Rectangle	7.87in (200mm)	1.73in x 3in (44mm x 76mm)	1.1in (28mm)

SOLAR-MATIC

Solar-powered electric ventilator with a low profile and automatic operation. Provides consistent airflow of 17.5 CFM when exposed to sunlight. Maintenance free without integrated battery.



VERSION	MODEL	MATERIAL	EXTERIOR COLOR	SHUTTER COLOR	SHUTTER SHAPE	OVERALL SIZE	OPENING SIZE	INSTALLED HEIGHT
Solar-Matic	AVA830-X	Plastic	White	White	Round	8.46in (215mm)	4.57in (116mm)	1.38in (35mm)



Contact Us

p: 763-762-3451

e: sales@nationalfleetproducts.com

w: www.nationalfleetproducts.com

208 Capital Drive
Buffalo, MN 55313