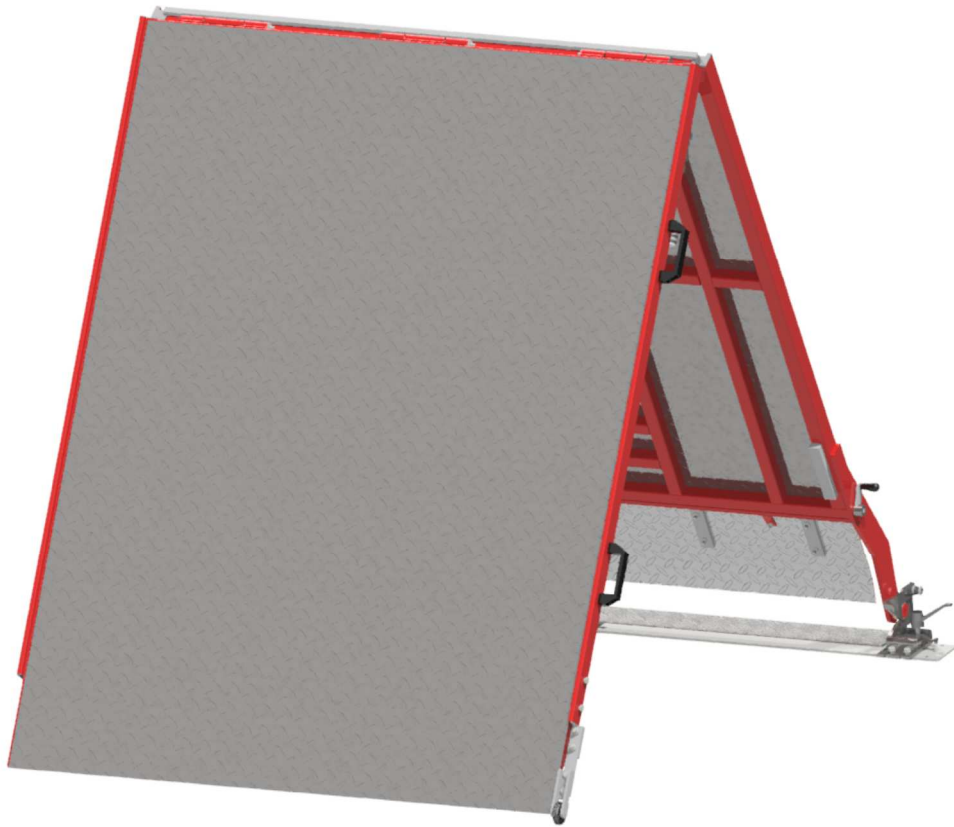


# PC PC-R



REV. 10 29.01.2020

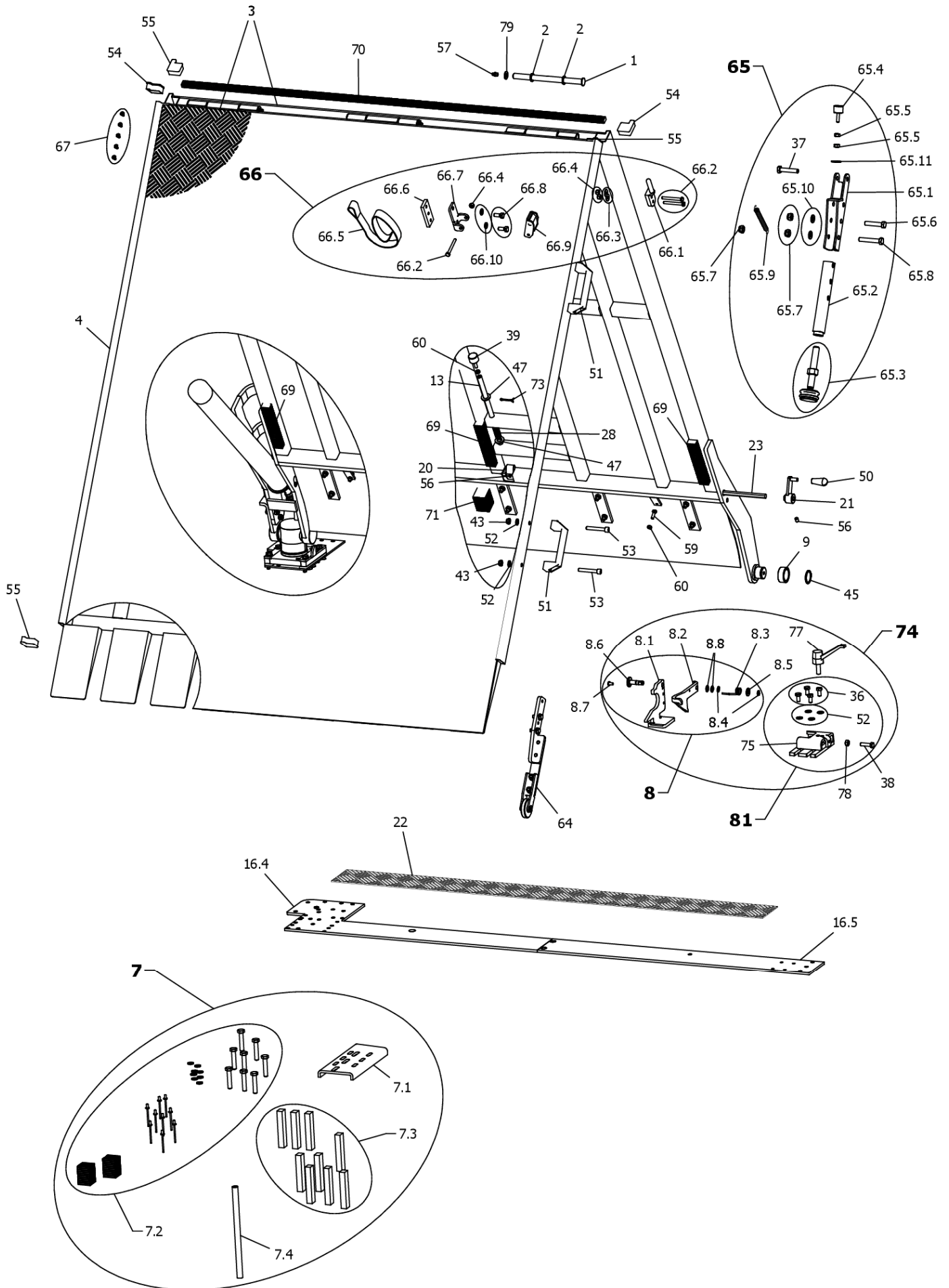
**WM System S.r.l.**

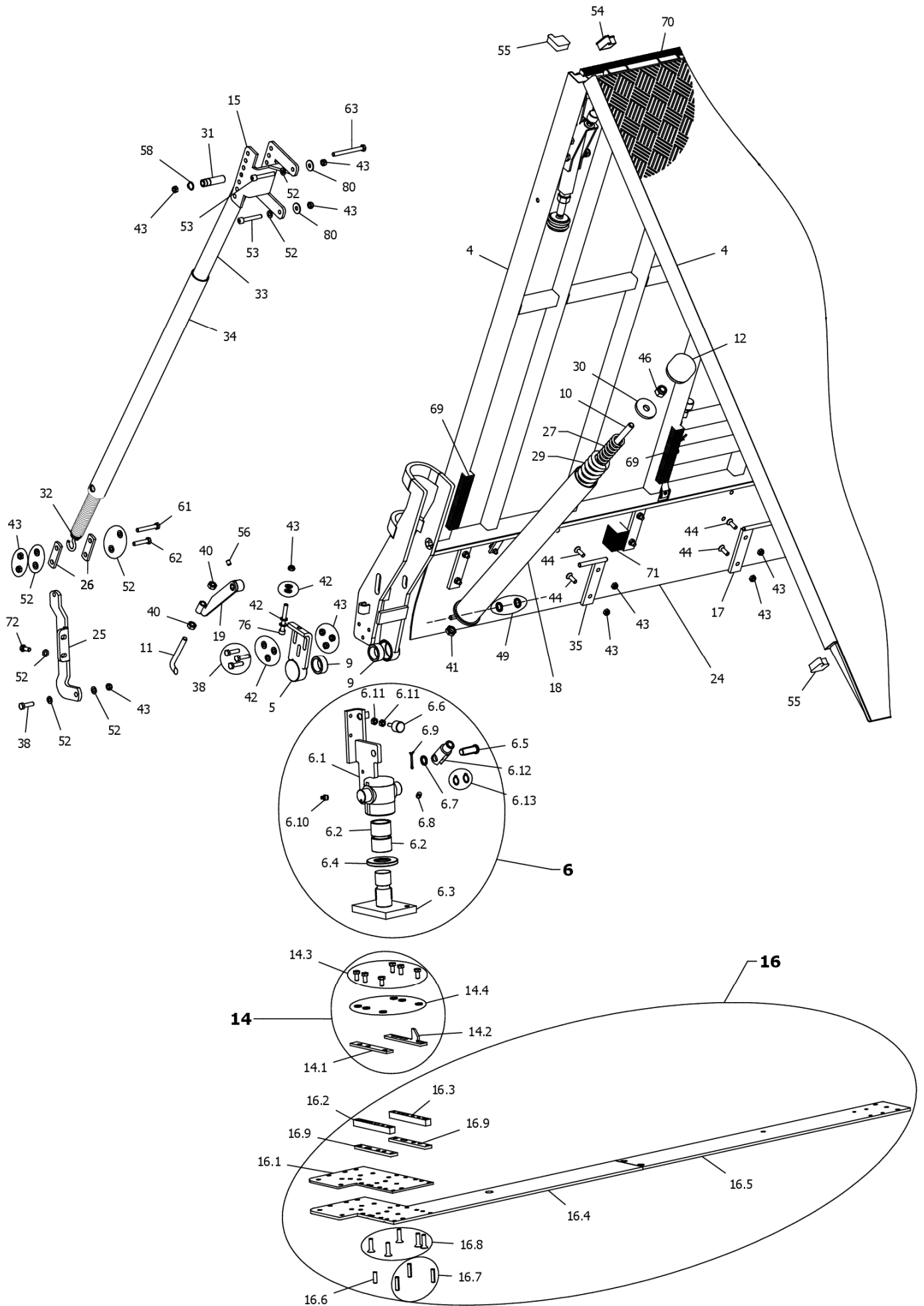
Rampe di carico - Loading ramps

T. (+39) 0522 665664 - F. (+39) 0522 660327 - E. [info@wmsystem.com](mailto:info@wmsystem.com) - W. [www.wmsystem.com](http://www.wmsystem.com)

Sede Operativa: Via Campogrande 94/96 Sede Legale: Via 2 Giugno, 5 42047 ROLO (RE) ITALY

P.I. e C.F. IT00325950350






<b>ELEMENTO ELEMENT</b>	<b>QUANTITÀ QUANTITY</b>	<b>CODICE WM WM CODE</b>
1	*	41.056
2	*	333.000
3	1	* 41.
4	1	* 61.
5	1	* 51.159/
6	1	* 51.134/
6.1	1	* 51.010/
6.2	2	41.004
6.3	1	51.020
6.4	1	41.006
6.5	1	41.083
6.6	1	380.001
6.7	1	333.100
6.8	1	312.001
6.9	1	398.000
6.10	1	393.000
6.11	2	320.000
6.12	1	394.000
6.13	2	335.003
7	1	* 71.
7.1	*	* 41.
7.2	*	* 71.
7.3	1	71.210
7.4	1	41.076
8	1	51.002-1
8.1	1	41.009-1
8.2	1	41.424/1F
8.3	1	41.066
8.4	2	335.001
8.5	2	330.003
8.6	1	41.050-2
8.7	1	314.020
8.8	2	330.011
9	3	41.008
10	1	41.019
11	1	41.026
12	1	41.030
13	1	41.054


<b>ELEMENTO ELEMENT</b>	<b>QUANTITÀ QUANTITY</b>	<b>CODICE WM WM CODE</b>
14	1	71.000/PC
14.1	1	41.057/F
14.2	1	4ALPC.015-1
14.3	6	310.000
14.4	6	330.001
15	1	51.155
16	1	* 51.
16.1	1	* 41.
16.2	1	41.887-1
16.3	1	41.888-1
16.4	1	* 41.
16.5	1	* 41.
16.6	1	365.005
16.7	3	365.002
16.8	5	316.012
16.9	2	41.886
17	*	51.014
18	1	* 51.005/
19	1	5ALPC.008
20	1	51.007
21	1	51.006
22	1	* 41.
23	1	* 41.
24	1	* 41.
25	1	41.458
26	2	41.451
27	1	*
28	1	41.067
29	1	*
30	1	41.074
31	1	41.069
32	1	*
33	1	*41.
34	1	*41.
35	*	51.015
36	4	310.003
37	2	310.001
38	5	310.004

<b>ELEMENTO ELEMENT</b>	<b>QUANTITÀ QUANTITY</b>	<b>CODICE WM WM CODE</b>
39	1	380.002
40	2	320.001
41	1	320.002
42	7	330.000
43	24	322.001
44	*	316.000
45	1	335.005
46	1	322.002
47	2	330.004
49	2	333.100
50	1	381.003
51	2	* 381.
52	17	330.001
53	*	* 311.
54	2	391.007
55	3	391.006
56	3	312.000
57	*	393.000
58	1	335.006
59	2	310.005
60	3	320.004
61	1	310.012
62	1	310.016
63	1	310.026
64	1	71.004
65	*	51.162
65.1	1	51.161
65.2	1	51.022
65.3	1	51.138
65.4	1	380.001
65.5	2	320.000
65.6	1	310.001
65.7	3	322.003
65.8	1	310.006
65.9	1	41.439
65.10	2	330.003
65.11	1	330.310

<b>ELEMENTO ELEMENT</b>	<b>QUANTITÀ QUANTITY</b>	<b>CODICE WM WM CODE</b>
66	*	<b>81.013</b>
66.1	1	<b>41.041/F</b>
66.2	3	<b>310.002</b>
66.3	2	<b>330.005</b>
66.4	3	<b>322.000</b>
66.5	1	<b>389.002</b>
66.6	1	<b>41.040</b>
66.7	1	<b>51.016</b>
66.8	2	<b>310.000</b>
66.9	1	<b>389.003</b>
66.10	2	<b>330.001</b>
67	*	<b>392.000</b>
69	3	<b>391.004/1</b>
70	1	<b>355.000/1</b>
71	1	<b>391.003/1</b>
72	1	<b>310.000</b>
73	1	<b>398.000</b>
74	1	<b>71.020/PC</b>
75	1	<b>51.158</b>
76	1	<b>311.009</b>
77	1	<b>381.001</b>
78	1	<b>320.000</b>
79	*	<b>330.003</b>
80	2	<b>330.310</b>
81	1	<b>71.025/PC</b>

# RAMP PLAQUE - TARGHETTA IDENTIFICATIVA WM SYSTEM

	MODEL		YEAR
	WIDTH	CM	
	LENGTH	CM	
	CAPACITY		LLB
		KG	
SERIAL NUM.			



MODEL - MODELLO
WIDTH OF RAMP - LARGHEZZA DELLA RAMPA
LENGTH OF RAMP - LUNGHEZZA DELLA RAMPA
YEAR OF PRODUCTION - ANNO DI PRODUZIONE
CAPACITY KG / LLB - PORTATA KG / LLB
SERIAL NUMBER - NUMERO TELAIO

THE PART'S CODE CHANGES ACCORDING TO THE RAMP MODEL, ITS MEASURES AND THE VEHICLE TYPE. PLEASE CONTACT WM SYSTEM LTD FOR THE SPECIFIC CODE. (+39 0522 665664 [info@wmsystem.com](mailto:info@wmsystem.com)).

\*

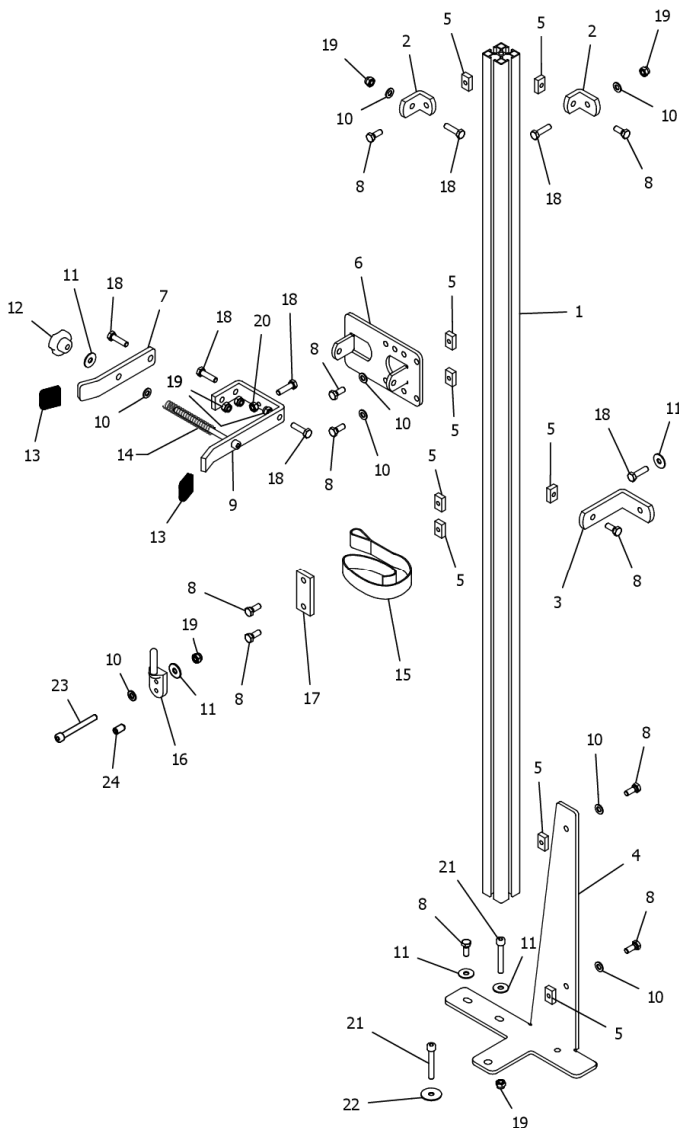
IL CODICE DI QUESTO PARTICOLARE CAMBIA A SECONDA DEL MODELLO DI RAMPA, DELLE SUE MISURE E DAL TIPO DI VEICOLO. CONTATTARE WM SYSTEM SRL PER IL CODICE SPECIFICO. (+39 0522 665664 [info@wmsystem.com](mailto:info@wmsystem.com)).



# OPTIONAL & ACCESSORIES

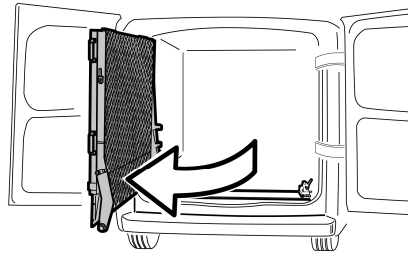
## SUPPORT SYSTEM - PALO D'ANCORAGGIO

### 51.168 - PALO D'ANCORAGGIO DUCATO

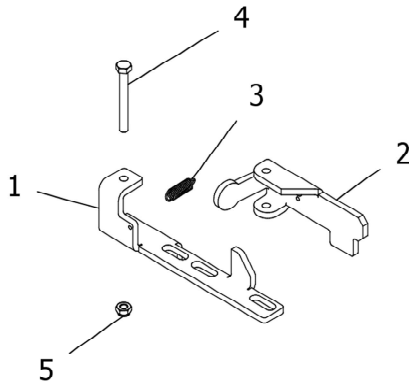


ELEMENTO ELEMENT	QUANTITÀ QUANTITY	CODICE WM WM CODE
1	1	41.468
2	2	41.497
3	1	41.496
4	1	41.467-1
5	9	41.446
6	1	51.171
7	1	41.444-1
8	10	310.000
9	1	51.173
10	9	330.001
11	4	330.310
12	1	351.003
13	2	381.007
14	1	396.021
15	1	389.002
16	1	41.453
17	1	41.447
18	7	310.004
19	6	322.001
20	1	320.000
21	2	311.001
22	1	330.009
23	1	311.013
24	1	312.000

## STOPPER AGAINST THE WIND - FERMO ANTIVENTO

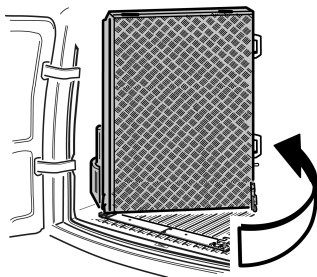


### 7ALPC.013-1

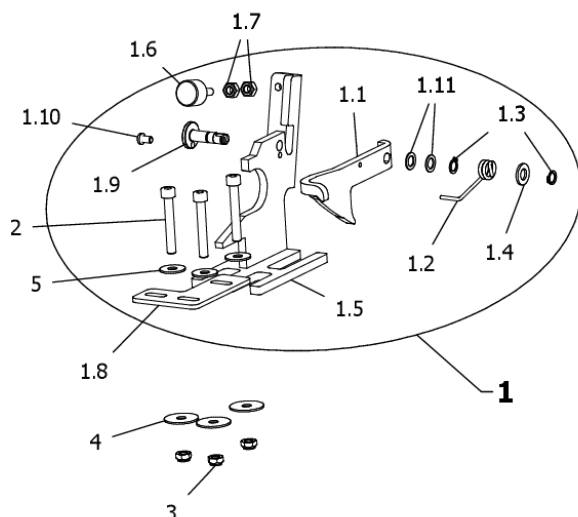


ELEMENTO ELEMENT	QUANTITÀ QUANTITY	CODICE WM WM CODE
1	1	41.936-3
2	1	41.937-4
3	1	4AL.159
4	1	310.002
5	1	322.000

## INTERNAL HOOK - GANCIO INTERNO



### 71.165

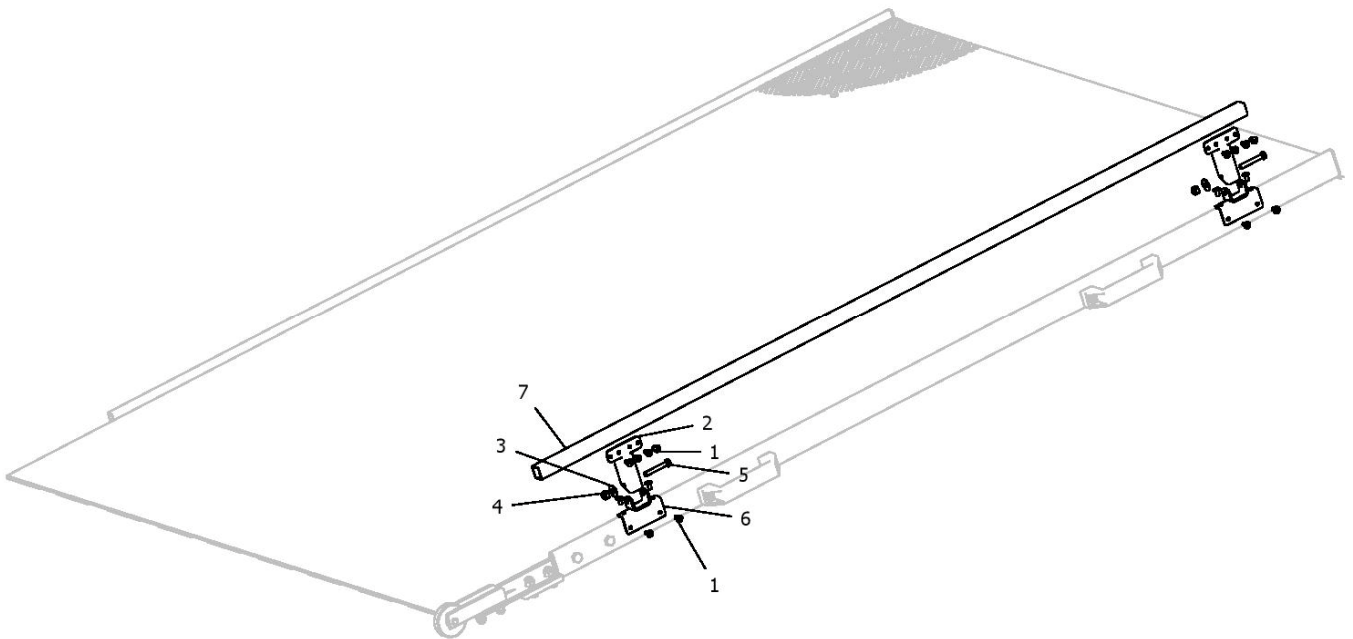


ELEMENTO ELEMENT	QUANTITÀ QUANTITY	CODICE WM WM CODE
1	1	5ALPC.025-3
1.1	1	41.424-1F
1.2	1	41.066
1.3	2	335.001
1.4	1	330.003
1.5	1	5ALPC.001-2
1.6	1	380.001
1.7	2	320.000
1.8	1	4ALPC.129
1.9	1	41.050-2
1.10	1	314.020
1.11	2	330.011
2	3	311.001
3	3	322.001
4	3	330.009
5	3	330.310

# FOLDABLE ALUMINIUM SIDE EDGES

## BORDI LATERALI IN ALLUMINIO PIEGHEVOLI

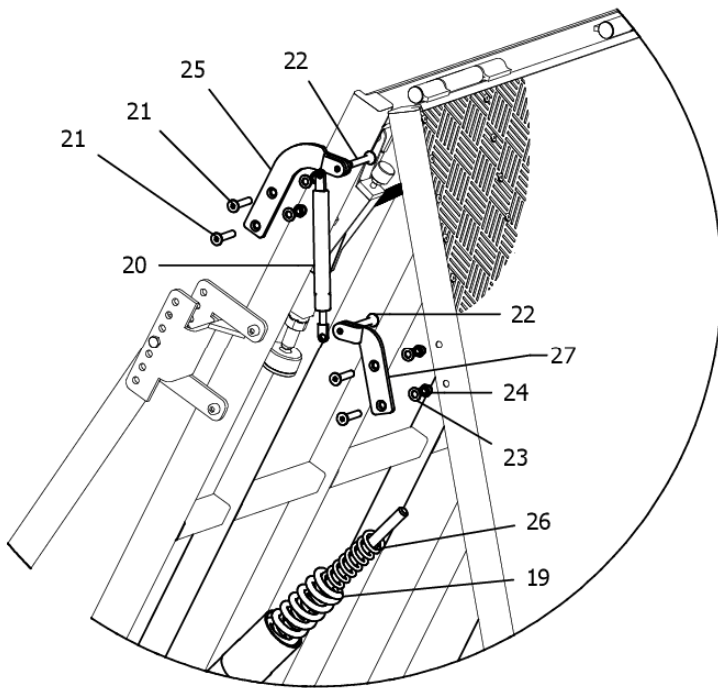
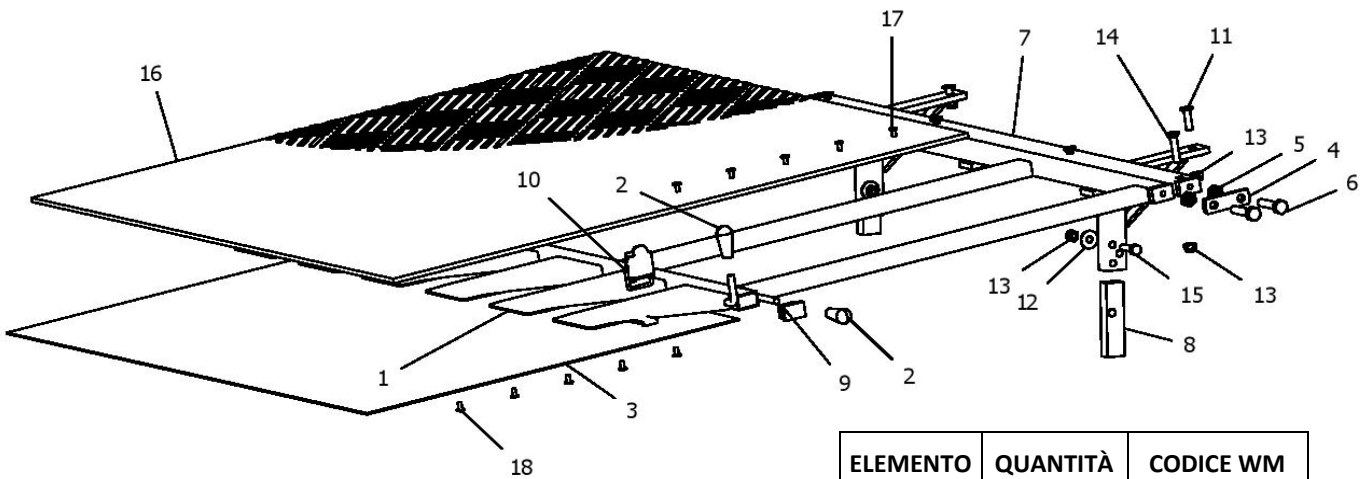
**81.012**



ELEMENTO ELEMENT	QUANTITÀ QUANTITY	CODICE WM WM CODE
1	8	392.000
2	2	41.459
3	2	330.005
4	2	322.000
5	2	310.010
6	2	51.157
7	1	*

# ADDITIONAL THIRD PIECE KIT

## 81.\_\_\_\_ KIT TERZO PEZZO

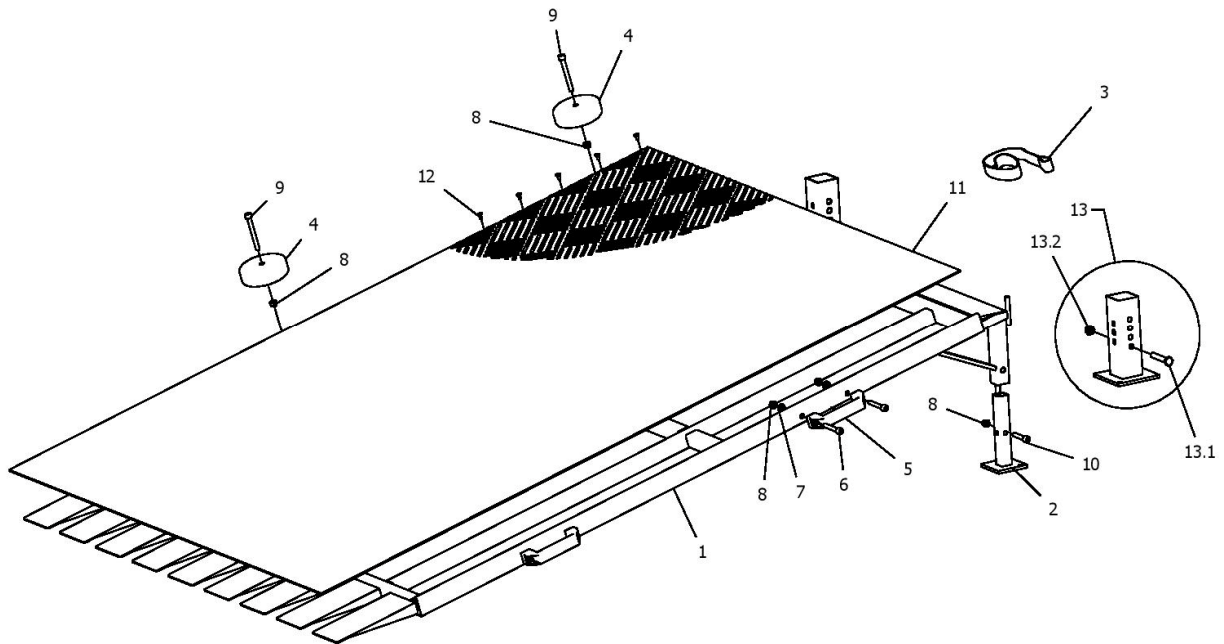


ELEMENTO ELEMENT	QUANTITÀ QUANTITY	CODICE WM WM CODE
1	1	* 61.
2	3	381.003
3	1	* 334.090
4	2	41.451
5	4	320.001
6	4	310.014
7	1	* 61.
8	2	340.000
9	2	382.002
10	1	350.003
11	2	316.012
12	8	330.310
13	8	322.001
14	4	316.001
15	2	310.004
16	1	*
17	*	392.000
18	*	392.001
19	1	*
20	1	* 396.
21	4	316.001
22	2	316.004
23	4	330.000
24	4	322.001
25	1	51.139
26	1	*
27	1	51.140

# REMOVABLE EXTENSION KIT

## KIT ALLUNGAMENTO AMOVIBILE

**81.\_\_\_\_**



ELEMENTO ELEMENT	QUANTITÀ QUANTITY	CODICE WM WM CODE
1	1	* 61.
2	2	51.001
3	1	9V.010
4	2	301.050
5	2	381.005
6	4	311.001
7	4	330.000
8	8	322.001
9	2	311.013
10	2	310.013
11	1	*
12	*	392.000
13	2	51.029
13.1	1	310.006
13.2	1	322.003