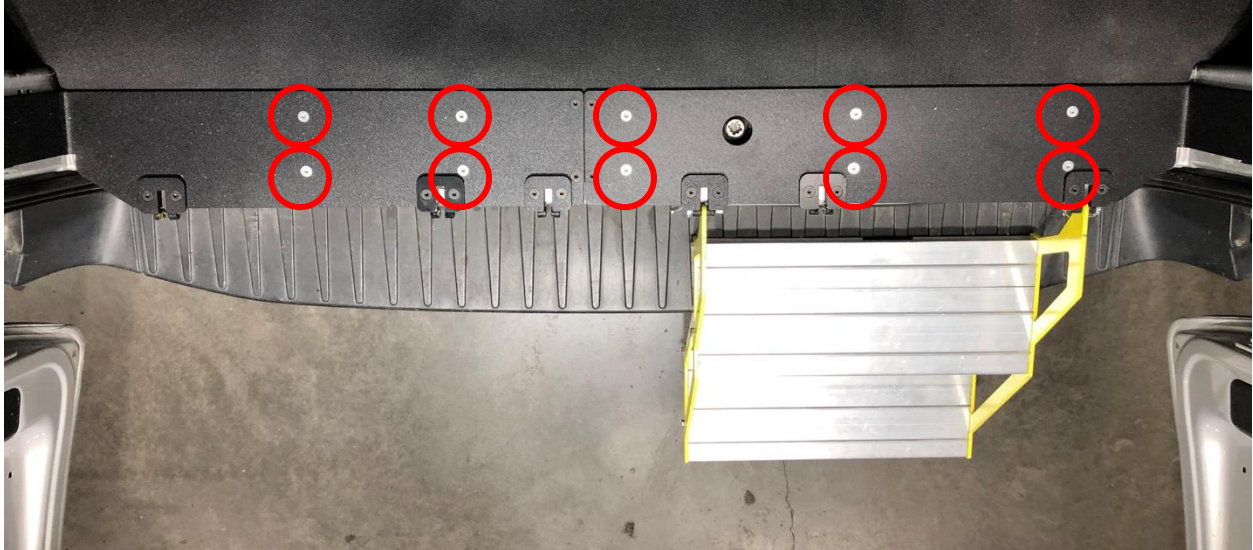


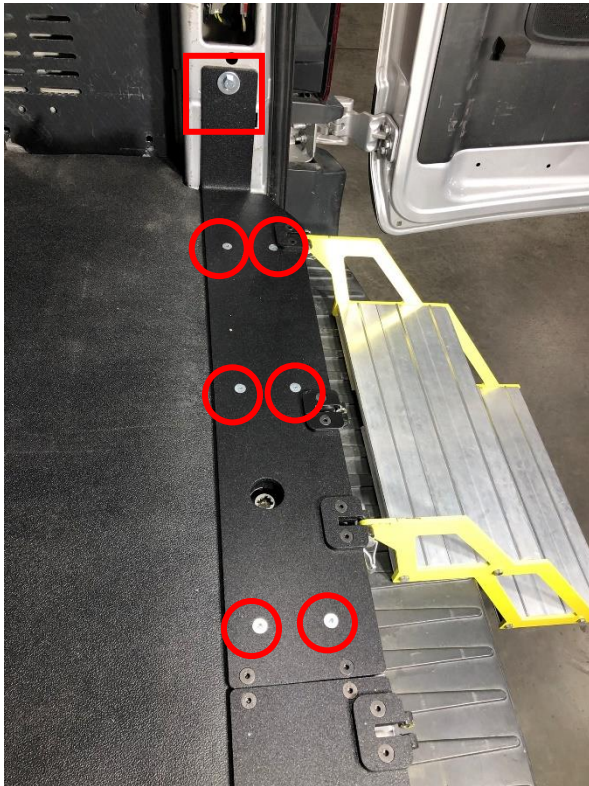


# Ford Transit Rear Door Van Step Install Instructions

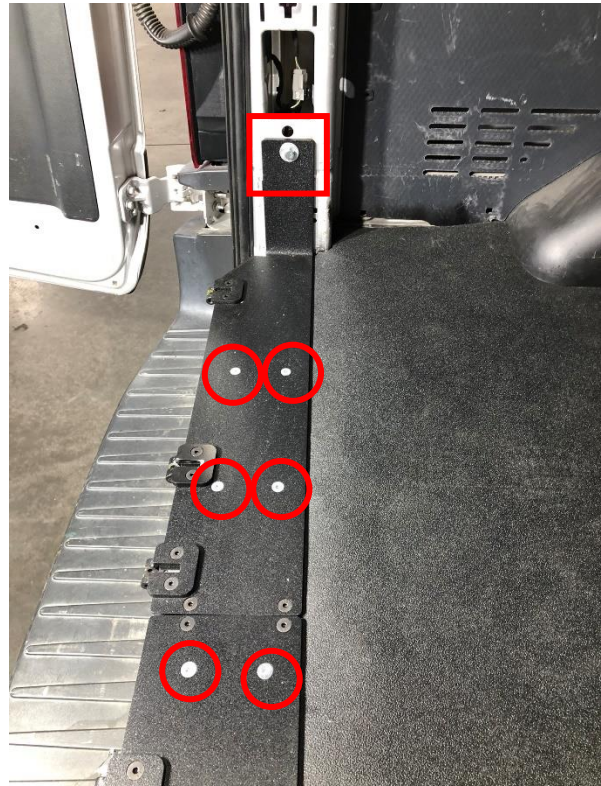
Areal view of driver-side and passenger-side mounting plates



Passenger-side mounting plate



Driver-side mounting plate





# Ford Transit Rear Door Van Step Install Instructions

1. Red circled bolts require a ½" hole drilled in floor (10 total). In those 10 holes, install the provided gold rivnuts.
2. In the door jamb, use the existing factory-provided holes that align with the mounting plates to install the provided nuts and bolts.
3. Install and tighten the mounting plates using the holes in steps 1 and 2.
4. Attach the step to the mounting plate using the provided quick-release pins.

Watch our demo video on YouTube for more info on your new van step:

<https://www.youtube.com/watch?v=Lp22UzRz1N8&t=3s>

Please contact us by phone or email with any questions or concerns during installation.

(763) 762-3451

[sales@nationalfleetproducts.com](mailto:sales@nationalfleetproducts.com)